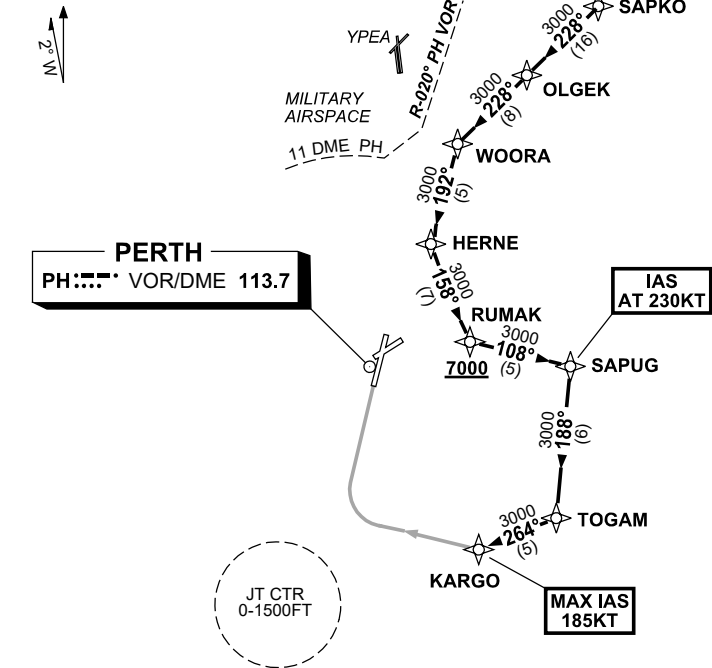


**STANDARD INSTRUMENT ARRIVAL (STAR)  
SAPKO TWO X-RAY ARRIVALS (NON-JET) (RNAV)  
PERTH, WA (YPPH)**

13 JUN 2024

ATIS 113.7 123.8	APP 123.6 132.95	TWR 127.4	SMC E of RWY 03/21 122.2 W of RWY 03/21 121.7	Bearings are Magnetic Elevations in FEET AMSL
---------------------	---------------------	--------------	---	--

NOT TO SCALE



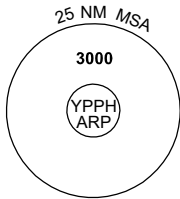
**SPEED  
MAX IAS 250KT  
BELOW 10,000ft**

**RNP1**

ATC APCH SPEEDS		
NM	FM	TD
KARGO	185	160

**IAS  
AT 230KT**

**MAX IAS  
185KT**



10 NM MSA 2700

**ARRIVAL:**

**SAPKO TWO**

- From SAPKO track 228° to OLGEK,
- Track 228° to WOORA,
- Turn LEFT, track 192° to HERNE,
- Turn LEFT, track 158° to RUMAK,  
    **Cross RUMAK AT or ABV 7000ft,**
- Turn LEFT, track 108° to SAPUG,  
    **IAS AT 230KT from SAPUG,**
- Turn RIGHT, track 188° to TOGAM,
- Turn RIGHT, track 264° to KARGO,  
    **MAX IAS 185KT from KARGO.**

**RWY 03 X-RAY:**

- From KARGO, turn RIGHT, track via RNP X RWY 03 (AR).

**COMMUNICATIONS FAILURE: PROCEDURE IN IMC**

- Squawk 7600, comply with vertical navigation requirements, but not below MSA.
- Track via the latest STAR clearance to the nominated runway, then fly the most suitable approach in accordance with ERS A EMERG Section 1.5.

Changes: VALIDITY NR, Editorial.

PPHSR15-179