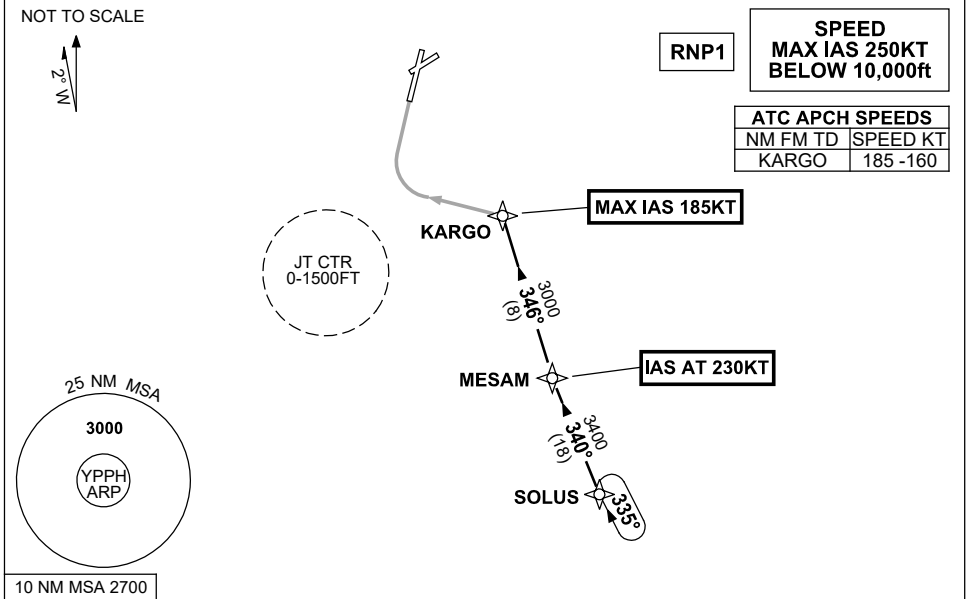


**STANDARD INSTRUMENT ARRIVAL (STAR)  
SOLUS THREE X-RAY ARRIVAL (RNAV)  
PERTH, WA (YPPH)**

**13 JUN 2024**

ATIS 113.7 123.8	APP 123.6	TWR 127.4	SMC E of RWY 03/21 122.2 W of RWY 03/21 121.7	Bearings are Magnetic Elevations in FEET AMSL
---------------------	--------------	--------------	---	--



10 NM MSA 2700

**ARRIVAL:**

**SOLUS THREE**

- From SOLUS track 340° to MESAM,  
**IAS AT 230KT** from MESAM,
- Turn RIGHT, track 346° to KARGO,  
MAX IAS 185KT from KARGO.

**RWY 03 X-RAY:** • From KARGO turn LEFT, track via RNP X RWY 03 (AR).

**COMMUNICATIONS FAILURE: PROCEDURE IN IMC**

- Squawk 7600, comply with vertical navigation requirements, but not below MSA.
- Track via the latest STAR clearance to the nominated runway, then fly the most suitable approach in accordance with ERSa EMERG Section 1.5.

Changes: VALIDITY NR, Editorial.

PPHSR14-179