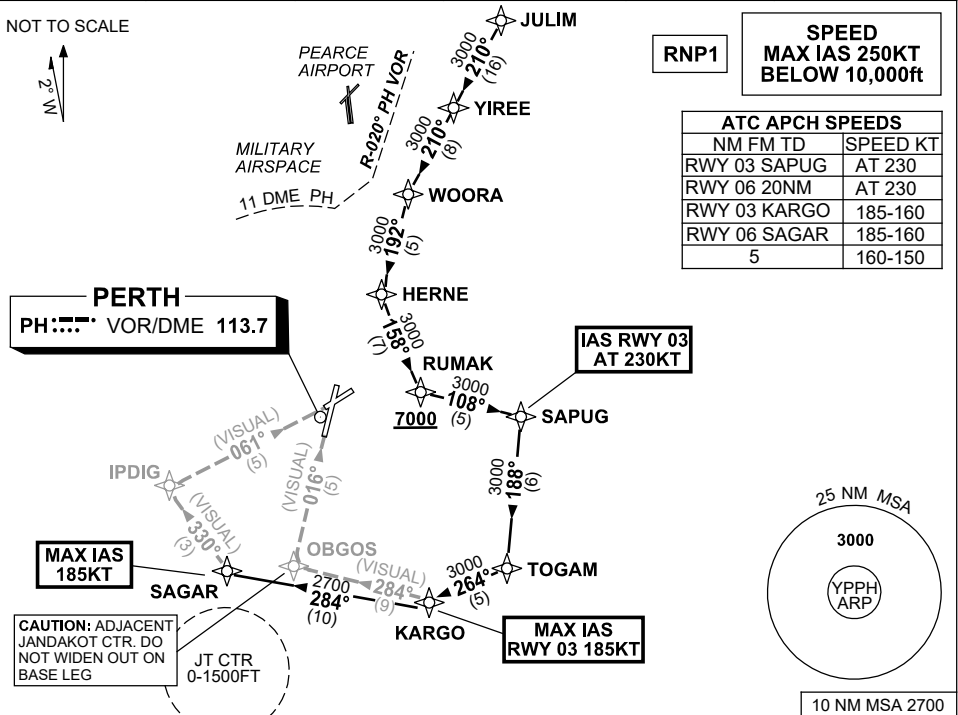


**STANDARD INSTRUMENT ARRIVAL (STAR)  
JULIM SIX VICTOR ARRIVALS (JET) (RNAV)  
PERTH, WA (YPPH)**

**13 JUN 2024**

ATIS 113.7 123.8	APP 123.6 132.95	TWR 127.4	SMC E of RWY 03/21 122.2 W of RWY 03/21 121.7	Bearings are Magnetic Elevations in FEET AMSL
---------------------	---------------------	--------------	---	--

NOT TO SCALE



**ARRIVAL:**

**JULIM SIX**

- From JULIM track 210° to YIREE,
- Track 210° to WOORA,
- Turn LEFT, track 192° to HERNE,
- Turn LEFT, track 158° to RUMAK,  
**Cross RUMAK AT or ABV 7000ft,**
- Turn LEFT, track 108° to SAPUG,  
**IAS RWY 03 AT 230KT from SAPUG,**
- Turn RIGHT, track 188° to TOGAM,
- Turn RIGHT, track 264° to KARGO,  
**MAX IAS RWY 03 185KT from KARGO.**

**RWY 03 VICTOR:**

- From KARGO,
- Turn RIGHT, track 284° VISUAL to OBGOS for VISUAL final RWY 03

**RWY 06 VICTOR:**

- From KARGO turn RIGHT, track 284° to SAGAR  
**MAX IAS 185KT from SAGAR**
- Turn RIGHT, track 330° VISUAL to IPDIG for VISUAL final RWY 06

**COMMUNICATIONS FAILURE: PROCEDURE IN IMC**

- Squawk 7600, comply with vertical navigation requirements, but not below MSA.
- Track via the latest STAR clearance to the nominated runway, then fly the most suitable approach in accordance with ERS A EMERG Section 1.5.