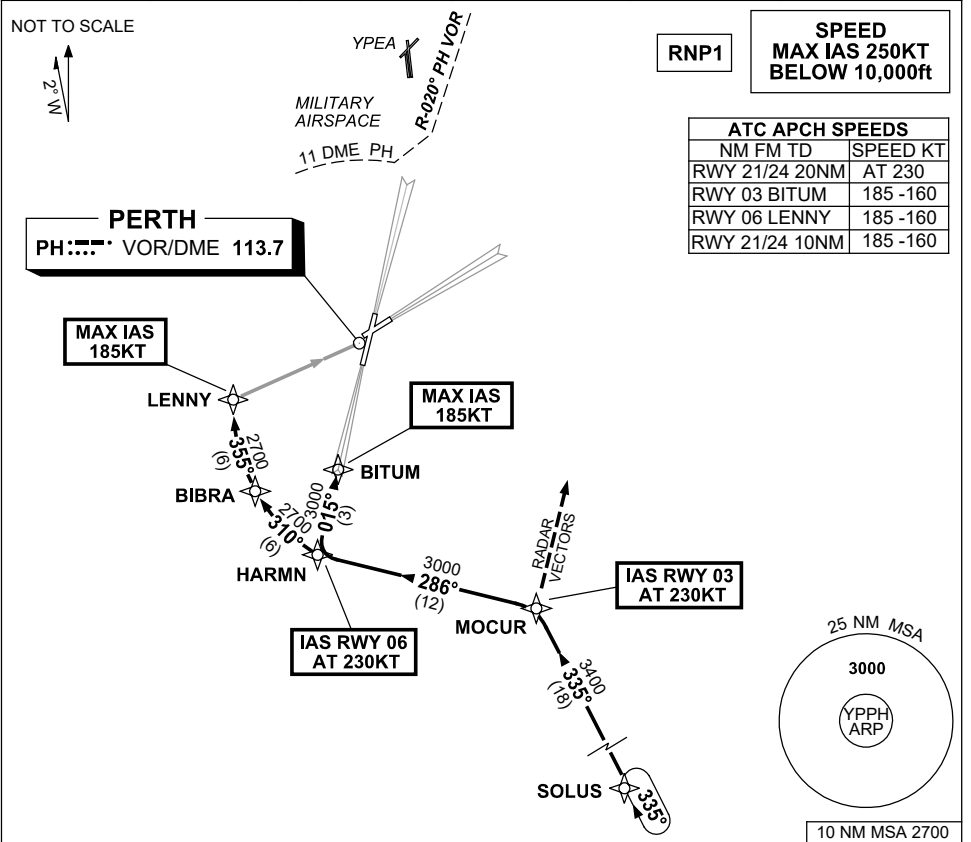


**STANDARD INSTRUMENT ARRIVAL (STAR)  
SOLUS THREE ALPHA ARRIVALS (RNAV)  
PERTH, WA (YPPH)**

**13 JUN 2024**

ATIS 113.7 123.8	APP 123.6	TWR 127.4	SMC E of RWY 03/21 122.2 W of RWY 03/21 121.7	Bearings are Magnetic Elevations in FEET AMSL
---------------------	--------------	--------------	---	--



**ARRIVAL: SOLUS THREE**

**RWY 03 ALPHA:**

- From SOLUS, track 335° to MOCUR, **IAS AT 230KT** from MOCUR
- Turn LEFT, track 286° to HARMN,
- Turn RIGHT, track 015° to BITUM, for ILS, RNP Z or LOC RWY 03 APPROACH.  
MAX IAS 185KT from BITUM

**RWY 21 ALPHA:**

From SOLUS, track 335° to MOCUR, Expect radar vectors for ILS, RNP or LOC RWY 21 APPROACH.

**RWY 06 ALPHA:**

- From SOLUS, track 335° to MOCUR,
- Turn LEFT, track 286° to HARMN, **IAS AT 230KT** from HARMN
- Turn RIGHT, track 310° to BIBRA,
- Turn RIGHT, track 355° to LENNY for RNP or VOR RWY 06 APPROACH.  
MAX IAS 185KT from LENNY

**RWY 24 ALPHA:**

From SOLUS, track 335° to MOCUR, Expect radar vectors for ILS, RNP or LOC-RWY 24 APPROACH.

**COMMUNICATIONS FAILURE: PROCEDURE IN IMC**

- Squawk 7600, comply with vertical navigation requirements, but not below MSA.
- Track via the latest STAR clearance to the nominated runway, then fly the most suitable approach in accordance with ERSA EMERG Section 1.5.

Changes: BITUM REPLACES TIMMY, VALIDITY INDICATOR.

PPHSR10-179