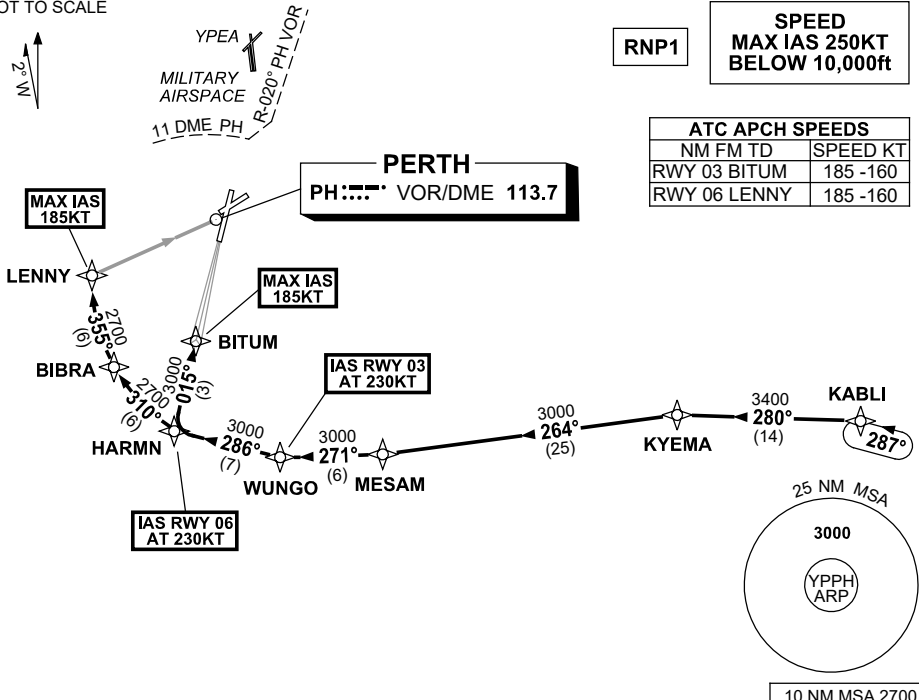


**STANDARD INSTRUMENT ARRIVAL (STAR)
KABLI ONE ALPHA ARRIVALS (JET) (RNAV) RWY 03/06
PERTH, WA (YPPH)**

13 JUN 2024

ATIS 113.7 123.8	APP 123.6	TWR 127.4	SMC E of RWY 03/21 122.2 W of RWY 03/21 121.7	Bearings are Magnetic Elevations in FEET AMSL
---------------------	--------------	--------------	---	--

NOT TO SCALE



ARRIVAL: KABLI ONE

RWY 03 ALPHA:

- From KABLI, track 280° to KYEMA,
- Turn LEFT, track 264° to MESAM,
- Turn RIGHT, track 271° to WUNGO,
IAS AT 230KT from WUNGO,
- Turn RIGHT, track 286° to HARMN,
- Turn RIGHT, track 015° to BITUM
for ILS, RNP Z or
LOC RWY 03 APPROACH.
MAX IAS 185KT from BITUM,

RWY 06 ALPHA:

- From KABLI, track 280° to KYEMA,
- Turn LEFT, track 264° to MESAM,
- Turn RIGHT, track 271° to WUNGO,
- Turn RIGHT, track 286° to HARMN,
IAS AT 230KT from HARMN,
- Turn RIGHT, track 310° to BIBRA,
- Turn RIGHT, track 355° to LENNY
for RNP or
VOR RWY 06 APPROACH.
MAX IAS 185KT from LENNY.

COMMUNICATIONS FAILURE: PROCEDURE IN IMC

- Squawk 7600, comply with vertical navigation requirements, but not below MSA.
- Track via the latest STAR clearance to the nominated runway, then fly the most suitable approach in accordance with ERSA EMERG Section 1.5.

Changes: BITUM REPLACES TIMMY, KABLI REPLACES BEVLY, VALIDITY INDICATOR.

PPHSR09-179