

**STANDARD INSTRUMENT ARRIVAL (STAR)  
LAVEX ONE X-RAY ARRIVAL (NON-JET) (RNAV)  
PERTH, WA (YPPH)**

**13 JUN 2024**

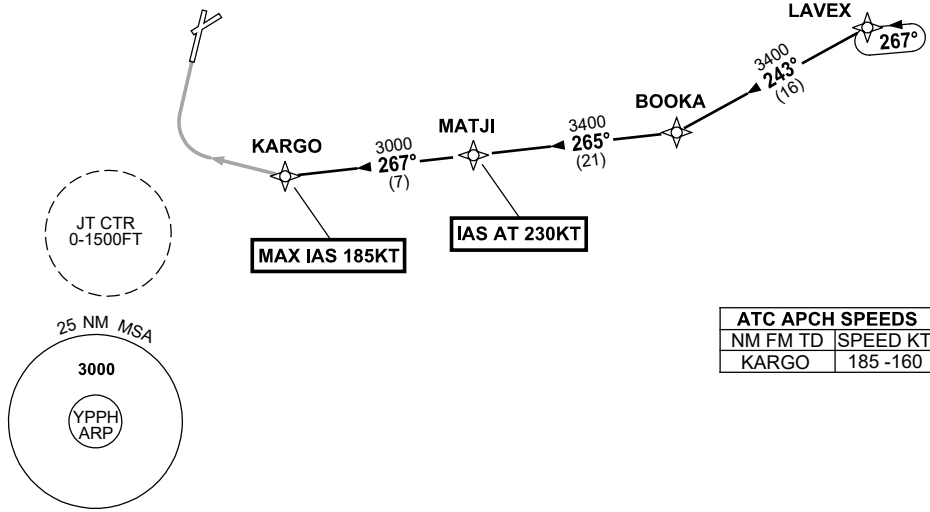
ATIS 113.7 123.8	APP 123.6	TWR 127.4	SMC E of RWY 03/21 122.2 W of RWY 03/21 121.7	Bearings are Magnetic Elevations in FEET AMSL
---------------------	--------------	--------------	---	--

NOT TO SCALE



**SPEED  
MAX IAS 250KT  
BELOW 10,000ft**

**RNP1**



ATC APCH SPEEDS		
NM FM TD	SPEED KT	
KARGO	185 -160	

10 NM MSA 2700

**ARRIVAL: LAVEX ONE**

- From LAVEX, track 243° to BOOKA,
- Turn RIGHT, track 265° to MATJI,  
**IAS AT 230KT** from MATJI,
- Turn RIGHT, track 267° to KARGO,  
**MAX IAS 185KT** from KARGO.

**RWY 03 X-RAY:** • From KARGO turn RIGHT, track via RNP X RWY 03 (AR).

**COMMUNICATIONS FAILURE: PROCEDURE IN IMC**

- Squawk 7600, comply with vertical navigation requirements, but not below MSA.
- Track via the latest STAR clearance to the nominated runway, then fly the most suitable approach in accordance with ERSA EMERG Section 1.5.

Changes: LAVEX REPLACES GRENE, VALIDITY INDICATOR.

PPHSR06-179