

**STANDARD INSTRUMENT ARRIVAL (STAR)
JULIM SIX ALPHA ARRIVALS (JET) (RNAV) RWY 03/06
PERTH, WA (YPPH)**

13 JUN 2024

ATIS 113.7 123.8	APP 123.6 132.95	TWR 127.4	SMC E of RWY 03/21 122.2 W of RWY 03/21 121.7	Bearings are Magnetic Elevations in FEET AMSL
---------------------	---------------------	--------------	---	--

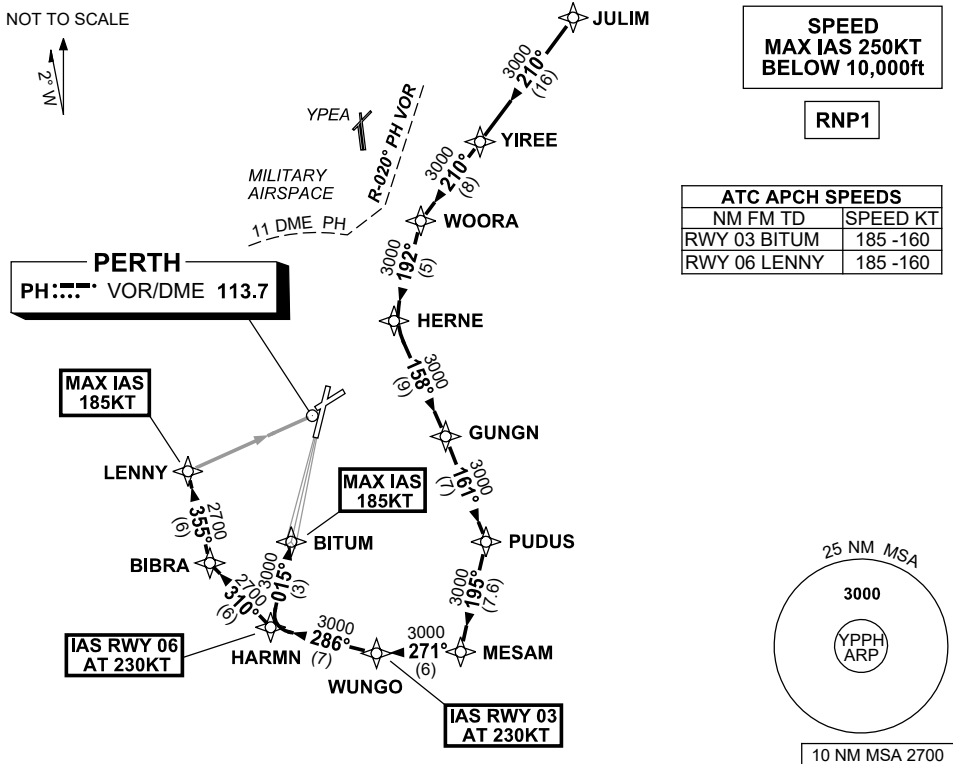
NOT TO SCALE



**SPEED
MAX IAS 250KT
BELOW 10,000ft**

RNP1

ATC APCH SPEEDS			SPEED KT
NM	FM	TD	
RWY 03	BITUM		185 -160
RWY 06	LENNY		185 -160



ARRIVAL: JULIM SIX

RWY 03 ALPHA:

- From JULIM, track 210° to YIREE,
- Track 210° to WOORA,
- Turn LEFT, track 192° to HERNE,
- Turn LEFT, track 158° to GUNGN,
- Turn RIGHT, track 161° to PUDUS
- Turn RIGHT, track 195° to MESAM,
- Turn RIGHT, track 271° to WUNGO,
IAS AT 230KT from WUNGO
- Turn RIGHT, track 286° to HARMN,
- Turn RIGHT, track 015° to BITUM,
for ILS, RNP Z or
LOC RWY 03 APPROACH,
MAX IAS 185KT from BITUM.

RWY 06 ALPHA:

- From JULIM, track 210° to YIREE,
- Track 210° to WOORA,
- Turn LEFT, track 192° to HERNE,
- Turn LEFT, track 158° to GUNGN,
- Turn RIGHT, track 161° to PUDUS
- Turn RIGHT, track 195° to MESAM,
- Turn RIGHT, track 271° to WUNGO,
- Turn RIGHT, track 286° to HARMN,
IAS AT 230KT from HARMN,
- Turn RIGHT, track 310° to BIBRA,
- Turn RIGHT, track 355° to LENNY,
for RNP or
VOR RWY 06 APPROACH,
MAX IAS 185KT from LENNY.

COMMUNICATIONS FAILURE: PROCEDURE IN IMC

- Squawk 7600, comply with vertical navigation requirements, but not below MSA.
- Track via the latest STAR clearance to the nominated runway, then fly the most suitable approach in accordance with ERSa EMERG Section 1.5.

Changes: BITUM REPLACES TIMMY, VALIDITY INDICATOR.

PPHSR04-179