

**STANDARD INSTRUMENT ARRIVAL (STAR)  
SAPKO TWO VICTOR ARRIVALS (NON-JET) (RNAV)  
PERTH, WA (YPPH)**

**13 JUN 2024**

ATIS 113.7 123.8	APP 123.6 132.95	TWR 127.4	SMC E of RWY 03/21 122.2 W of RWY 03/21 121.7	Bearings are Magnetic Elevations in FEET AMSL
---------------------	---------------------	--------------	---	--

ATC APCH SPEEDS	
NM FM TD	SPEED KT
RWY 03 SAPUG	AT 230
RWY 06 20NM	AT 230
RWY 03 KARGO	185-160
RWY 06 SAGAR	185-160
5	160-150

**SPEED  
MAX IAS 250KT  
BELOW 10,000ft**

**RNP1**

NOT TO SCALE



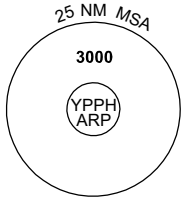
**PERTH  
PH :... VOR/DME 113.7**

**IAS RWY 03  
AT 230KT**

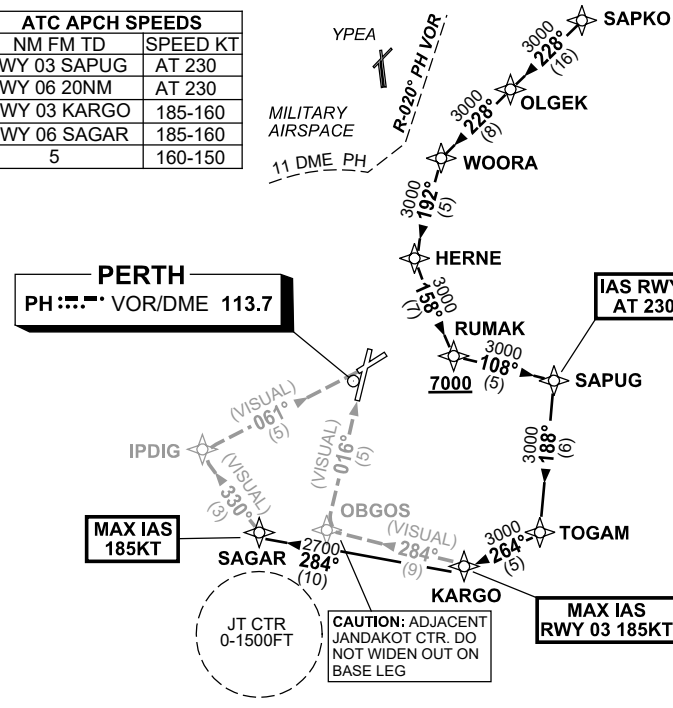
**MAX IAS  
185KT**

**MAX IAS  
RWY 03 185KT**

**CAUTION: ADJACENT  
JANDAKOT CTR. DO  
NOT WIDEN OUT ON  
BASE LEG**



10 NM MSA 2700



**ARRIVAL:**

**SAPKO TWO**

- From SAPKO track 228° to OLGEK,
- Track 228° to WOORA,
- Turn LEFT, track 192° to HERNE,
- Turn LEFT, track 158° to RUMAK,  
**Cross RUMAK AT or ABV 7000ft,**
- Turn LEFT, track 108° to SAPUG,  
**IAS RWY 03 AT 230KT from SAPUG,**
- Turn RIGHT, track 188° to TOGAM,
- Turn RIGHT, track 264° to KARGO,  
**MAX IAS RWY 03 185KT from KARGO.**

**RWY 03 VICTOR:**

- From KARGO,
- Turn RIGHT, track 284° VISUAL to OBGOS for VISUAL final RWY 03.

**RWY 06 VICTOR:**

- From KARGO turn RIGHT, track 284° to SAGAR  
**MAX IAS 185KT from SAGAR**
- Turn RIGHT, track 330° VISUAL to IPDIG for VISUAL final RWY 06

**COMMUNICATIONS FAILURE: PROCEDURE IN IMC**

- Squawk 7600, comply with vertical navigation requirements, but not below MSA.
- Track via the latest STAR clearance to the nominated runway, then fly the most suitable approach in accordance with ERS A EMERG Section 1.5.