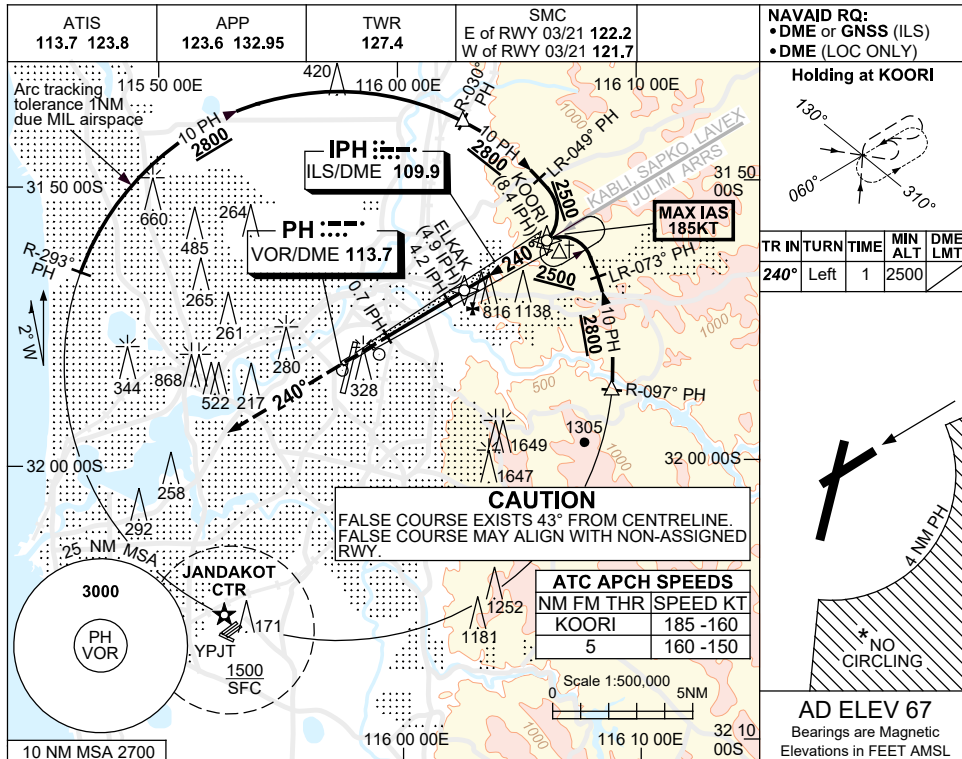


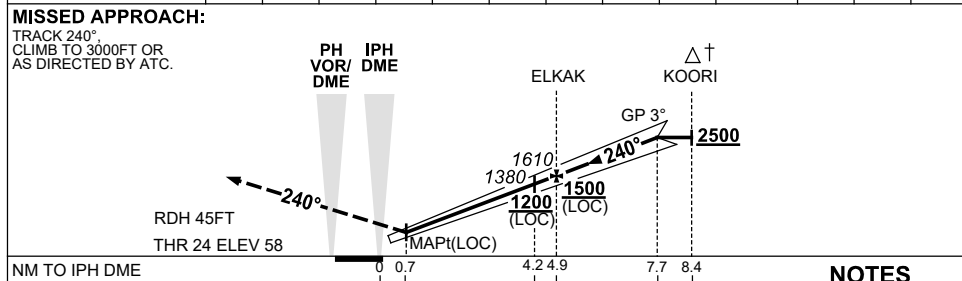
USE QNH

ILS-Z or LOC-Z RWY 24
PERTH, WA (YPPH)

13 JUN 2024



NM TO IPH DME	1.6	2	3	4.2	4.9	6	7	7.7					
ALT (3° APCH PATH)	550	690	1010	1380	1610	1960	2280	2500					



NM TO IPH DME	0	0.7	4.2	4.9	7.7	8.4
NM TO THR 24	0	0.5	4	4.7	8.3	

CATEGORY	A	B	C	D
S-I ILS		260 (202)	0.8	
S-I LOC		550 (492-1.9)		
CIRCLING *	760 (693-2.4)	1440 (1373-4.0)	1440 (1373-5.0)	
ALTERNATE*	(1193-4.4)	(1873-6.0)	(1873-7.0)	

Changes: KABLI REPLACES BEVLY, LAVEX REPLACES GRENE. PPHI06-179