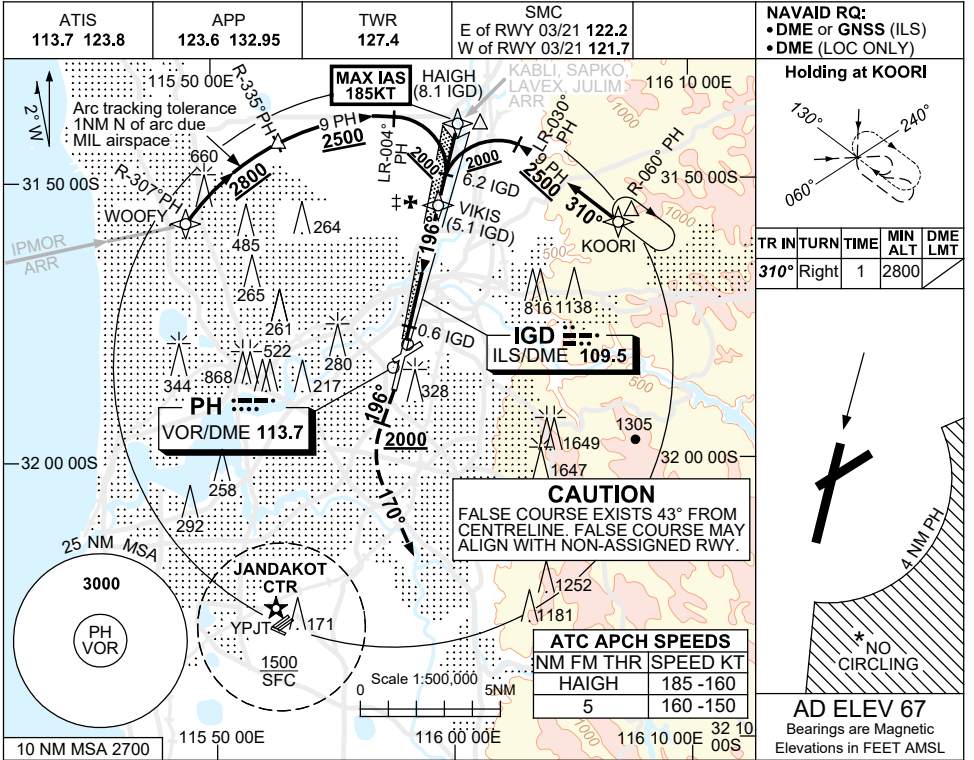
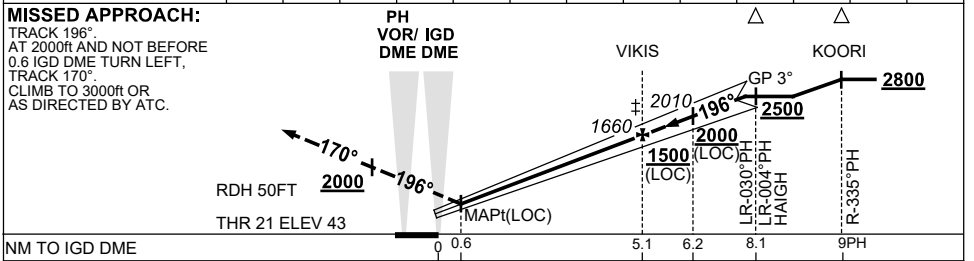


20 MAR 2025



NM TO IGD DME	1.6	2	3	4	5.1	6	6.2	7	7.7			
ALT (3° APCH PATH)	550	680	1000	1320	1660	1960	2010	2270	2500			



NM TO IGD DME	0	0.5	0.6	4.9	6	6.2	8.1	9PH
NM TO THR 21								

NOTES

- MAX IAS: HAIGH : 185KT.
- * NO CIRCLING CAT C&D ACFT BEYOND 4 DME PH E OF RWY 03 / 21 AND 06 / 24.
- †3. ACFT MAY BE RADAR VECTORED TO FNA.
- *4. SPECIAL ALTN MNM 700/2.5KM.
5. COLOUR: SEE SPEC NOTICES.

CATEGORY	A	B	C	D/DL
S-I ILS CAT I		250 (207) 0.8	550 RVR	
S-I LOC		550 (507-2.0)		
CIRCLING *	760 (693-2.4)	1440 (1373-4.0)	1440 (1373-5.0)	
ALTERNATE †	(1193-4.4)	(1873-6.0)	(1873-7.0)	

Changes: CAT DL.

PPII05-182