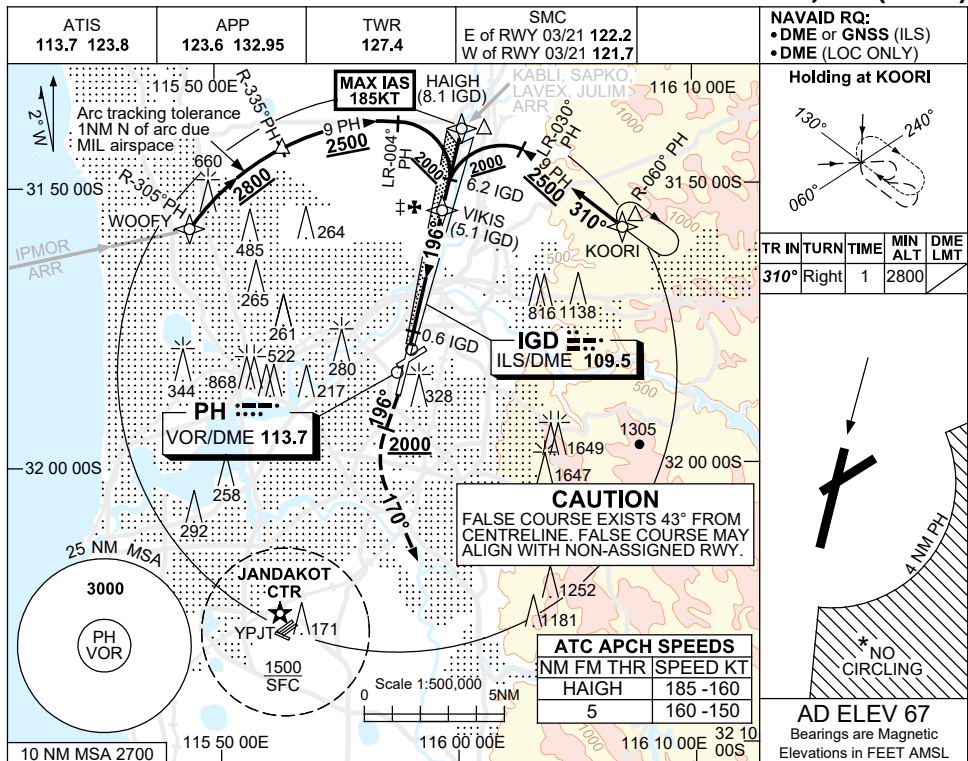
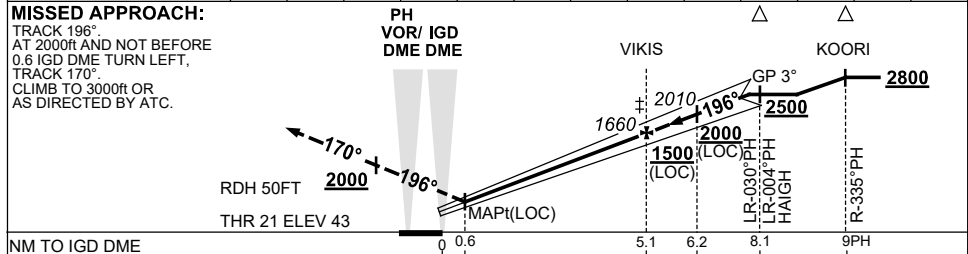


13 JUN 2024

**PERTH, WA (YPPH)**



NM TO IGD DME	1.6	2	3	4	5.1	6	6.2	7	7.7			
ALT (3° APCH PATH)	550	680	1000	1320	1660	1960	2010	2270	2500			



**NOTES**

1. MAX IAS:  
HAIGH : 185KT.
- \*2. NO CIRCLING CAT C&D  
ACFT BEYOND 4 DME  
PH E OF RWY 03/21  
AND 06 /24.
- †3. ACFT MAY BE RADAR  
VECTORED TO FNA.
- \*4. SPECIAL ALTN MNM  
700/2.5KM.
5. COLOUR: SEE  
SPEC NOTICES.

CATEGORY	A	B	C	D
S-I ILS CAT I		250 (207) 0.8	550 RVR	
S-I LOC		550 (507-2.0)		
CIRCLING *	760 (693-2.4)	1440 (1373-4.0)	1440 (1373-5.0)	
ALTERNATE †	(1193-4.4)	(1873-6.0)	(1873-7.0)	

Changes: KABLI REPLACES BEVLY, LAVEX REPLACES GRENE.

PPII05-179