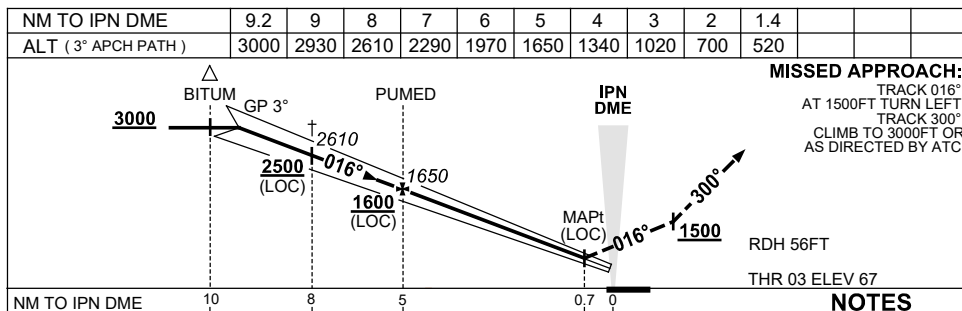
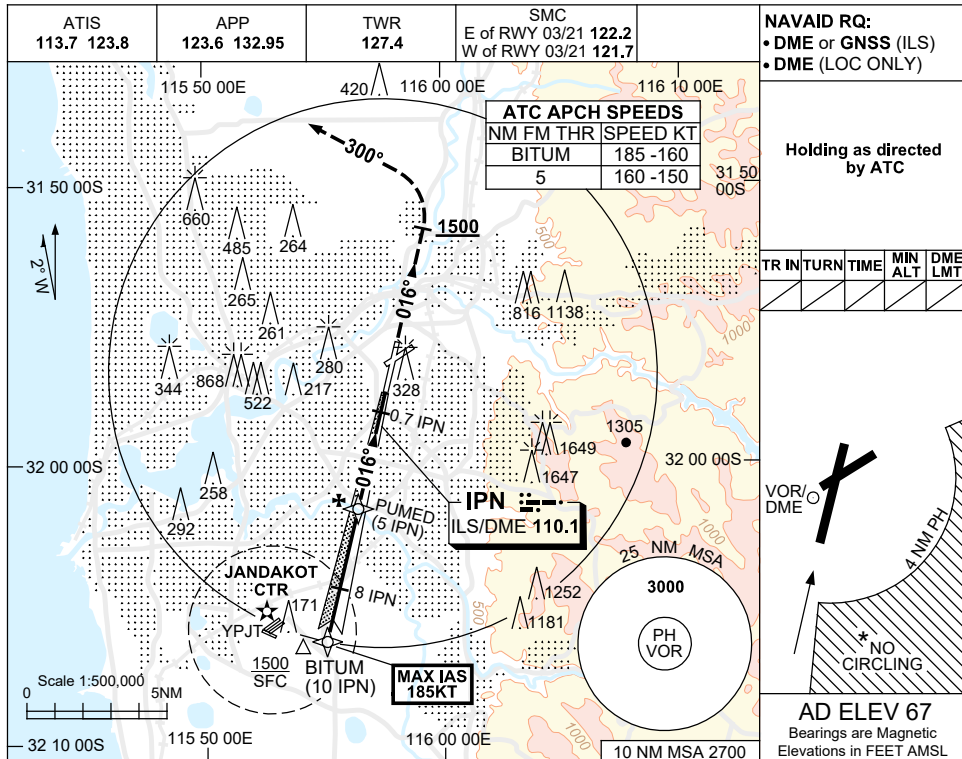


USE QNH

ILS-Z or LOC-Z RWY 03
PERTH, WA (YPPH)

13 JUN 2024



CATEGORY	A	B	C	D
S-I ILS SA CAT I #	RA 148 DA 217 (150) 450 RVR			
S-I ILS	270 (203) 0.8 550 RVR			
S-I LOC	520 (453-1.7)			
CIRCLING *	760 (693-2.4)		1440 (1373-4.0)	1440 (1373-5.0)
ALTERNATE ‡	(1193-4.4)		(1873-6.0)	(1873-7.0)

NOTES

1. MAX IAS:
BITUM : 185KT.
- #2. SPECIAL AIRCREW & ACFT CERTIFICATION REQUIRED
- *3. NO CIRCLING CAT C&D ACFT BEYOND 4NM PH E OF RWY 03/21 AND 06/24
- †4. ACFT MAY BE RADAR VECTORED TO FNA.
- *5. SPECIAL ALTN MNM 700/2.5KM.
6. COLOUR: SEE SPEC NOTICES.

Changes: BITUM REPLACES TIMMY.

PPH103-179