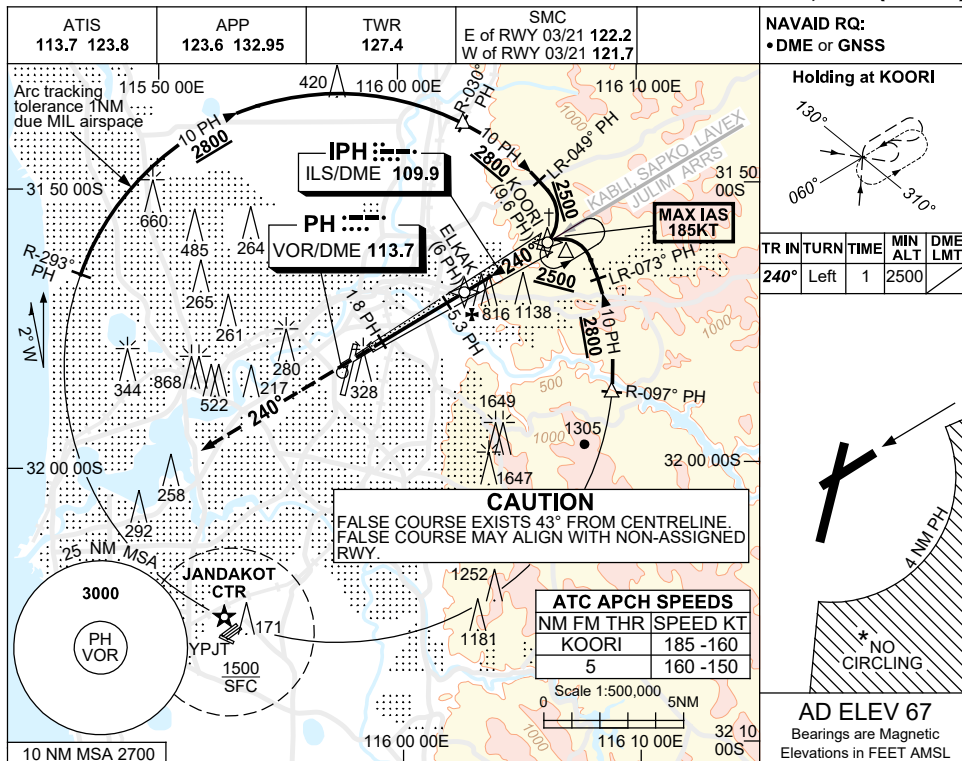


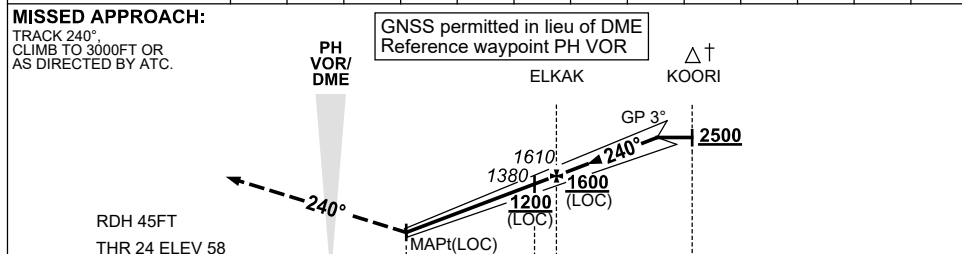
USE QNH

ILS-Y or LOC-Y RWY 24
PERTH, WA (YPPH)

13 JUN 2024



NM TO PH DME	2.7	3	4	5	5.3	6	7	8	8.8			
ALT (3° APCH PATH)	550	650	970	1290	1380	1610	1920	2240	2500			



CATEGORY	NOTES			
	A	B	C	D
S-I ILS		260 (202) 0.8		
S-I LOC		550 (492-1.9)		
CIRCLING *	760 (693-2.4)		1440 (1373-4.0)	1440 (1373-5.0)
ALTERNATE*	(1193-4.4)		(1873-6.0)	(1873-7.0)

- MAX IAS: KOORI : 185KT.
- NO CIRCLING CAT C&D ACFT BEYOND 4 DME PH E OF RWY 03/21 AND 06/24.
- ACFT MAY BE RADAR VECTORED TO KOORI.
- SPECIAL ALTN MNM 700/2.5KM.
- COLOUR: SEE SPEC NOTICES.

Changes: KABL I REPLACES BEVLY, LAVEX REPLACES GRENE.

PPH102-179