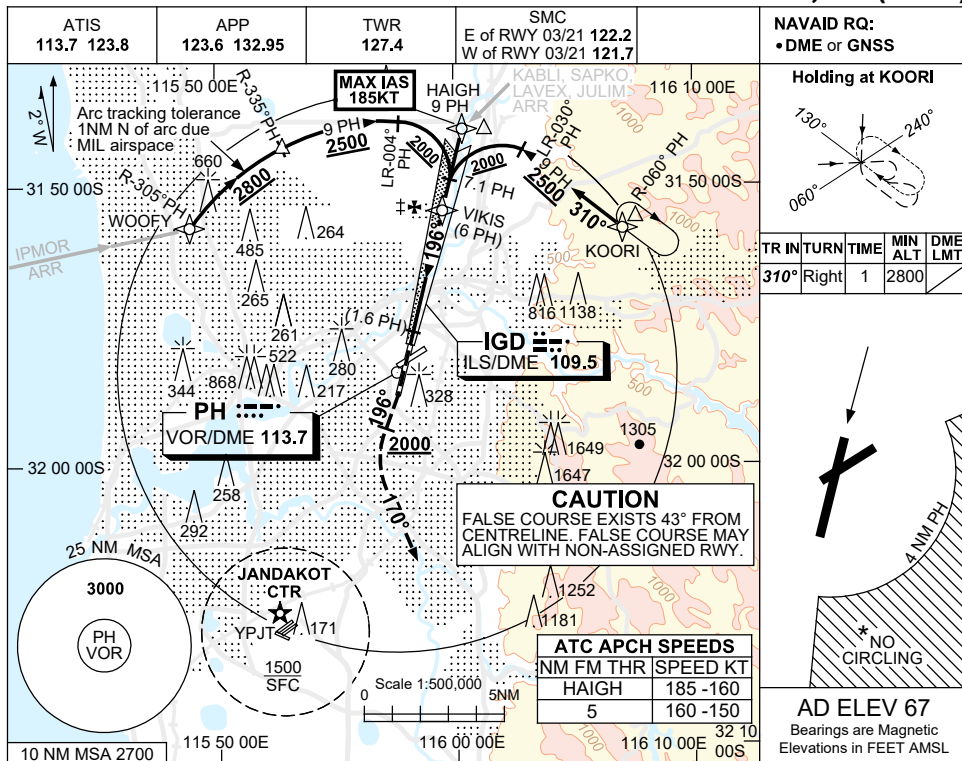


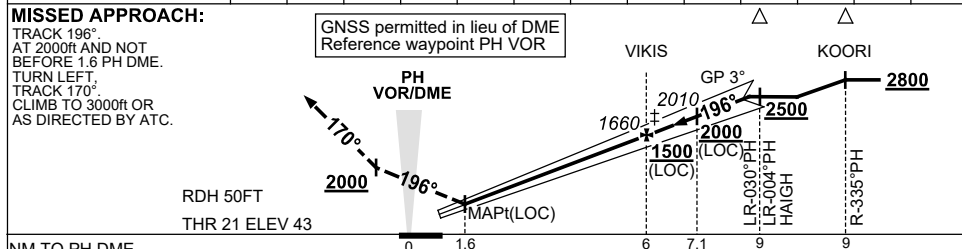
USE QNH

ILS-Y or LOC-Y RWY 21  
**PERTH, WA (YPPH)**

13 JUN 2024



NM TO PH DME	2.5	3	4	5	6	7	7.1	8	8.6			
ALT (3° APCH PATH)	550	710	1030	1340	1660	1980	2010	2300	2500			



NM TO PH DME	0	1.6	6	7.1	9	9
NM TO THR 21	0	0.5	4.9	6		

**NOTES**

1. MAX IAS: HAIGH : 185KT.
- \*2. NO CIRCLING CAT C&D ACFT BEYOND 4 DME PH E OF RWY 03/21 AND 06 /24.
- ‡3. ACFT MAY BE RADAR VECTORED TO FNA.
- \*4. SPECIAL ALTN MNM 700/2.5KM.
5. COLOUR: SEE SPEC NOTICES.

CATEGORY	A	B	C	D
S-I ILS		250 (207) 0.8	550 RVR	
S-I LOC		550 (507-2.0)		
CIRCLING *	760 (693-2.4)	1440 (1373-4.0)	1440 (1373-5.0)	
ALTERNATE ‡	(1193-4.4)	(1873-6.0)	(1873-7.0)	

Changes: KABL I REPLACES BEVLY, LAVEX REPLACES GRENE.

PPII01-179