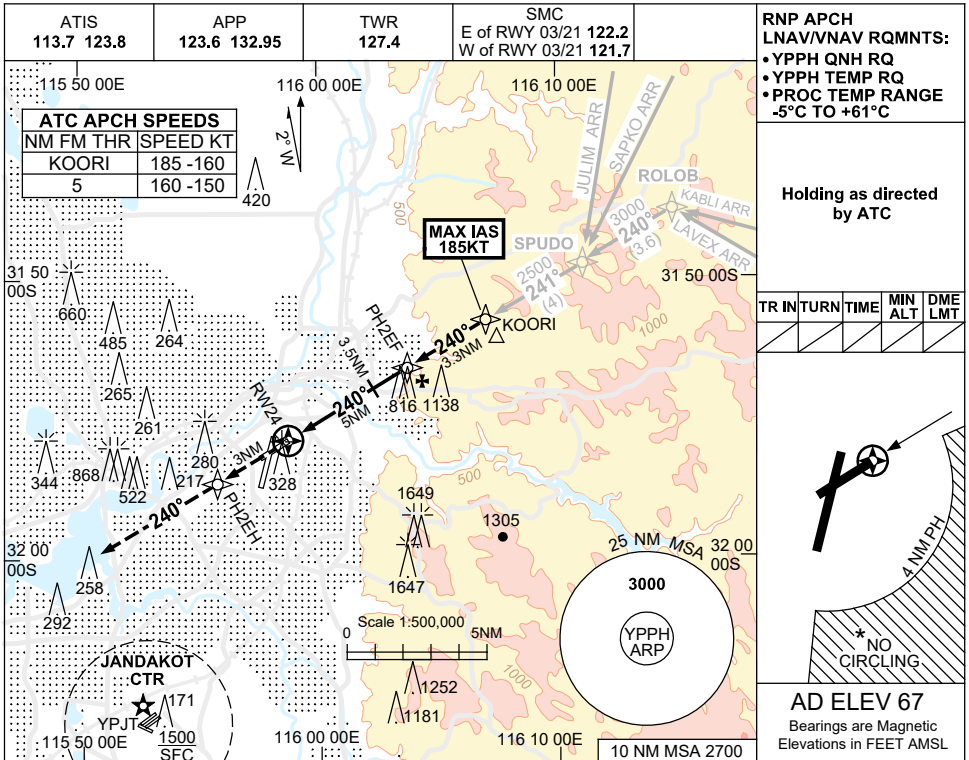


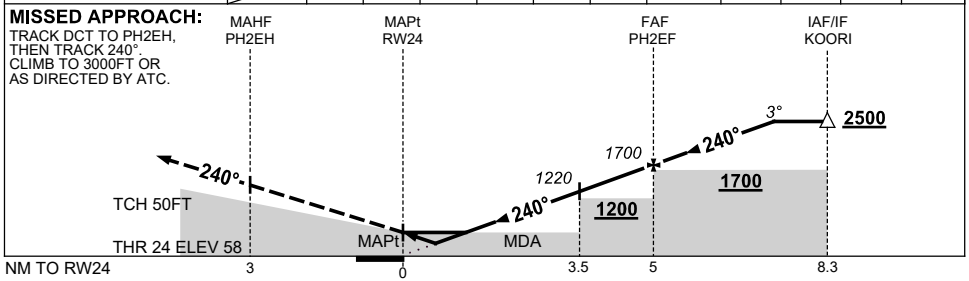
USE QNH

RNP RWY 24
PERTH, WA (YPPH)

13 JUN 2024



NM TO NEXT WPT	RW24	1	1.4	2	3	3.5	4	PH2EF	1	2	2.5	
ALT (3° APCH PATH)		430	560	740	1060	1220	1380	1700	2020	2340	2500	



NOTES

CATEGORY	A	B	C	D
LNAV/VNAV		430 (372-1.2)		
LNAV		560 (502-1.9)		
CIRCLING *	760 (693-2.4)	1440 (1373-4.0)		1440 (1373-5.0)
ALTERNATE	(1193-4.4)		(1873-6.0)	(1873-7.0)

1. MAX IAS: KOORI : 185KT.
 *2. NO CIRCLING CAT C&D ACFT BEYOND 4NM PH E OF RWY 03/21 AND 06/24.
 3. COLOUR: SEE SPEC NOTICES.

Changes: KABLI REPLACES BEVLY, LAVEX REPLACES GRENE.

PPHG04-179