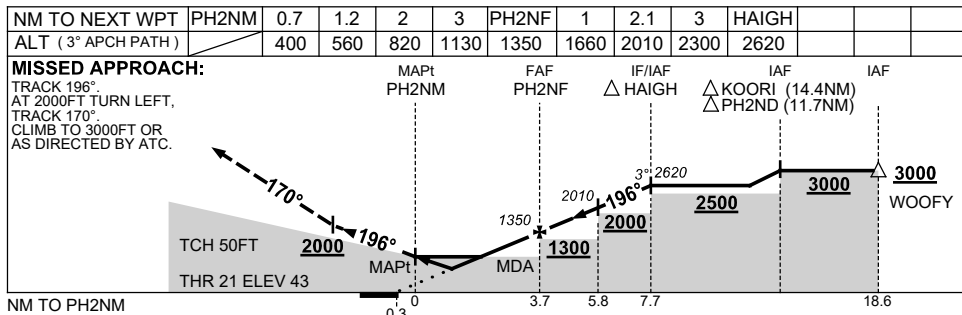
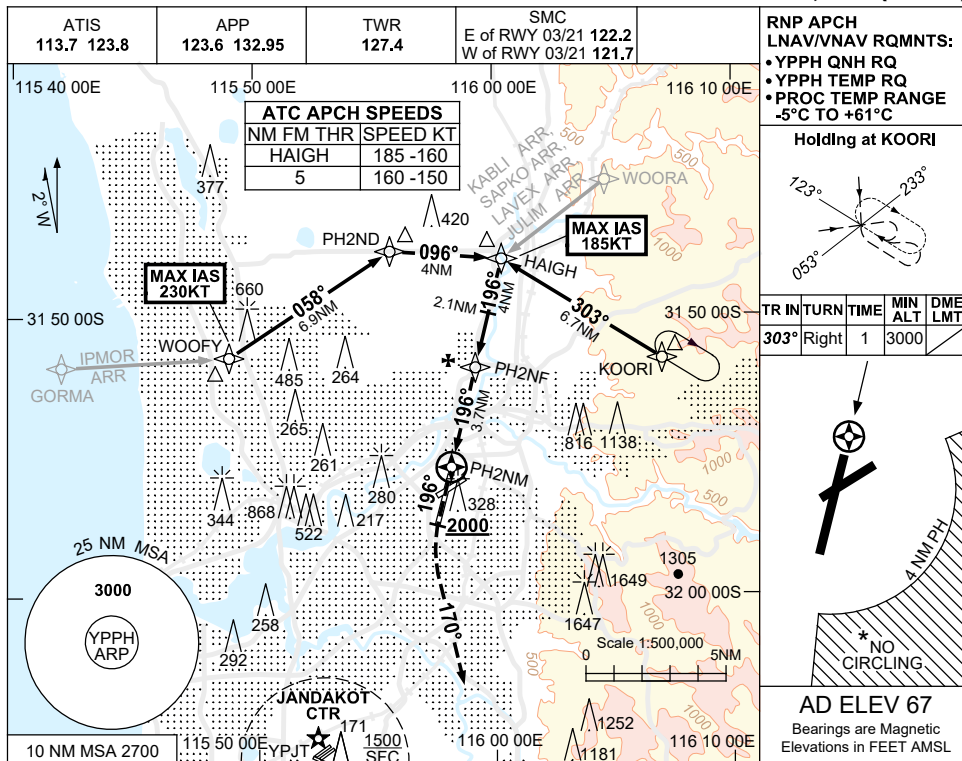


USE QNH

RNP RWY 21
PERTH, WA (YPPH)

13 JUN 2024



NOTES

CATEGORY	A	B	C	D
LNAV/VNAV		400 (357-1.1)		
LNAV		560 (517-2.0)		
CIRCLING*	760 (693-2.4)	1440 (1373-4.0)		1440 (1373-5.0)
ALTERNATE	(1193-4.4)		(1873-6.0)	(1873-7.0)

1. MAX IAS:
 HAIGH : 185KT,
 WOOFY : 230KT.
 * 2. NO CIRCLING CAT C & D
 ACFT BEYOND 4NM PH
 E OF RWY 03/21 AND 06/24.
 3. COLOUR: SEE SPEC NOTICES.

Changes: KABLI REPLACES BEVLY, LAVEX REPLACES GRENE.

PPHGN02-179