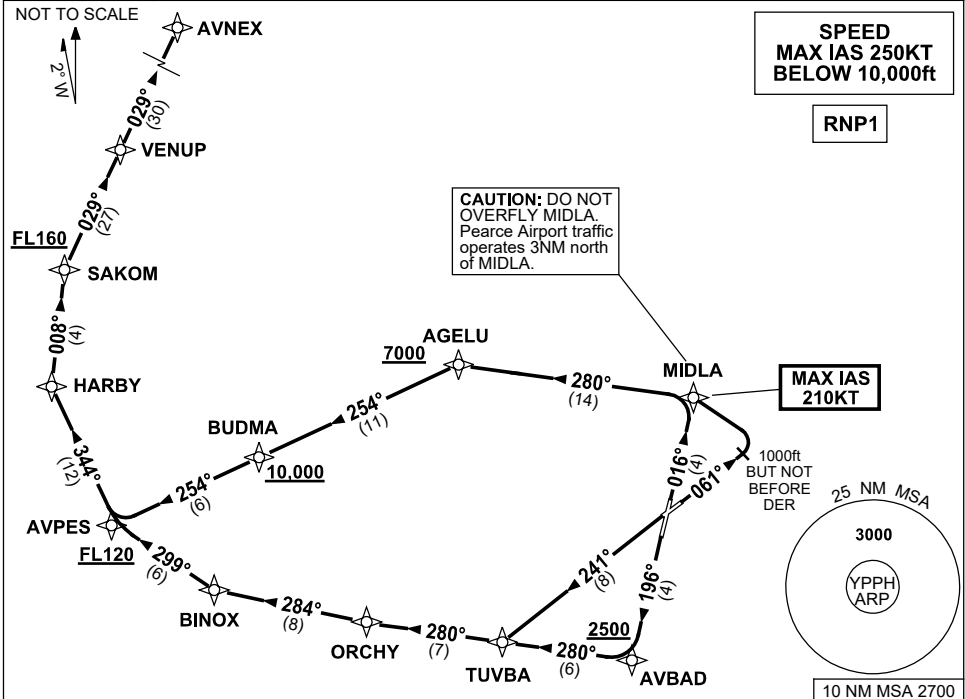


**STANDARD INSTRUMENT DEPARTURES (SID)
AVNEX FIVE (JET) (RNAV)
PERTH, WA (YPPH)**

21 MAR 2024

ATIS 113.7 123.8	ACD 118.55	SMC E of RWY 03/21 122.2 W of RWY 03/21 121.7	TWR 127.4	DEP 118.7	Bearings are Magnetic Elevations in FEET AMSL
---------------------	---------------	---	--------------	--------------	--

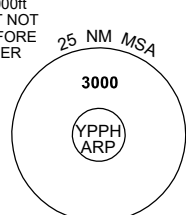


**SPEED
MAX IAS 250KT
BELOW 10,000ft**

RNP1

**CAUTION: DO NOT
OVERFLY MIDLA.**
Pearce Airport traffic
operates 3NM north
of MIDLA.

**MAX IAS
210KT**



10 NM MSA 2700

AVNEX FIVE DEPARTURE (JET) (RNAV)

RWY 03

GRAD 3.3% (6.1% to FL120, then 5.1% to FL160)
MAX IAS 210KT UNTIL MIDLA
• Track 016° to MIDLA

RWY 06

GRAD 4% to 2800ft (6.1% to FL120, then 5.1% to FL160)
MAX IAS 210KT UNTIL MIDLA

- Track 061°
- AT 1000ft but not before DER, turn LEFT
- Track DCT to MIDLA

From MIDLA

- Turn LEFT, track 280° to AGELU
Cross AGELU AT or ABV 7000ft
(RQ GRAD to AGELU is 7.0% for RWY 03 only)
- Turn LEFT, track 254° to BUDMA
Cross BUDMA AT or ABV 10,000ft
- Track 254° to AVPES
Cross AVPES AT or ABV FL120
- Turn RIGHT, track 344° to HARBY
- Turn RIGHT, track 008° to SAKOM
Cross SAKOM AT or ABV FL160
- Turn RIGHT, track 029° to VENUP
- Track 029° to AVNEX, then as cleared

RWY 21

GRAD 3.7% to 2800ft (10.6% to 2500ft, 5.7% to FL120, then 4.8% to FL160)

- Track 016° to MIDLA
Cross AVBAD AT or ABV 2500ft
- Turn RIGHT, track 280° to TUVBA

RWY 24

GRAD 3.7% to 2800ft (6.6% to FL120, then 4.8% to FL160)

- Track 241° to TUVBA

From TUVBA

- Track 280° to ORCHY
- Turn RIGHT, track 284° to BINOX
- Turn RIGHT, track 299° to AVPES
Cross AVPES AT or ABV FL120
- Turn RIGHT, track 344° to HARBY
- Turn RIGHT, track 008° to SAKOM
Cross SAKOM AT or ABV FL160
- Turn RIGHT, track 029° to VENUP
- Track 029° to AVNEX, then as cleared

Changes: MSA REF, DEP INSTRUCTIONS, Editorial.

