

**STANDARD INSTRUMENT DEPARTURES (SID)
PERTH SEVEN DEPARTURE (RADAR)
PERTH, WA (YPPH)**

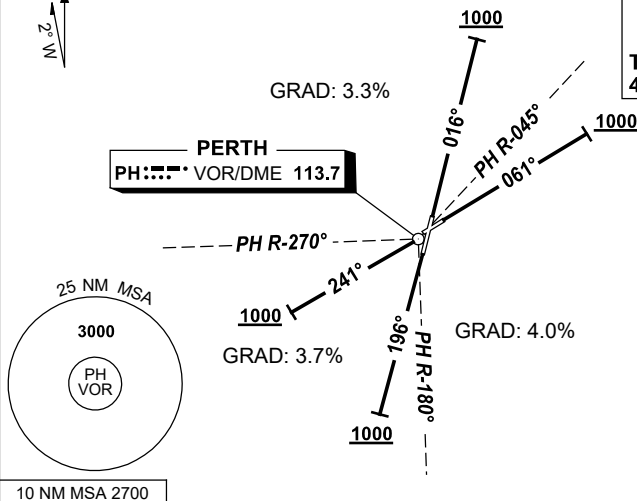
7 SEP 2023

ATIS 113.7 123.8	ACD 118.55	SMC E of RWY 03/21 122.2 W of RWY 03/21 121.7	TWR 127.4	DEP 118.7	Bearings are Magnetic Elevations in FEET AMSL
---------------------	---------------	-----------------------------------------------------	--------------	--------------	--------------------------------------------------

NOT TO SCALE



SPEED
MAX IAS 250KT
BELOW 10,000ft
NON-JET BLW 28,000KG
TO 4000ft 140-150KT
4000ft TO 10,000ft 170-180KT



PERTH SEVEN DEPARTURE (RADAR)

RWY 03

- Track 016°
- AT 1000ft but not before DER turn to Assigned Heading or track
- Contact Departures for Radar Vectors

RWY 06

- Track 061°
- AT 1000ft but not before DER turn to Assigned Heading or track
- Contact Departures for Radar Vectors

RWY 21

- Track 196°
- AT 1000ft but not before DER turn to Assigned Heading or track
- Contact Departures for Radar Vectors

RWY 24

- Track 241°
- AT 1000ft but not before DER turn to Assigned Heading or track
- Contact Departures for Radar Vectors

COMMUNICATIONS FAILURE : PROCEDURE IN IMC

On recognition of communication failure.

- Squawk 7600.
- Maintain last assigned vector for 2 minutes, and
- CLIMB IF NECESSARY TO MINIMUM SAFE ALTITUDE, to maintain terrain clearance, then
- Proceed in accordance with the latest ATC route clearance acknowledged.

Changes: RWY 06/24 INITIAL TRACKS.

PPHPD01-176