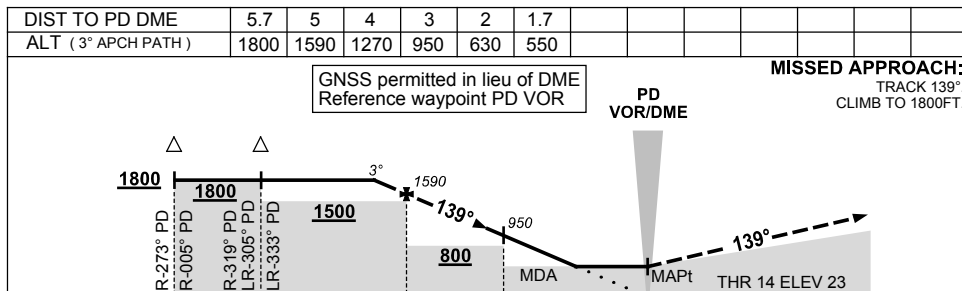
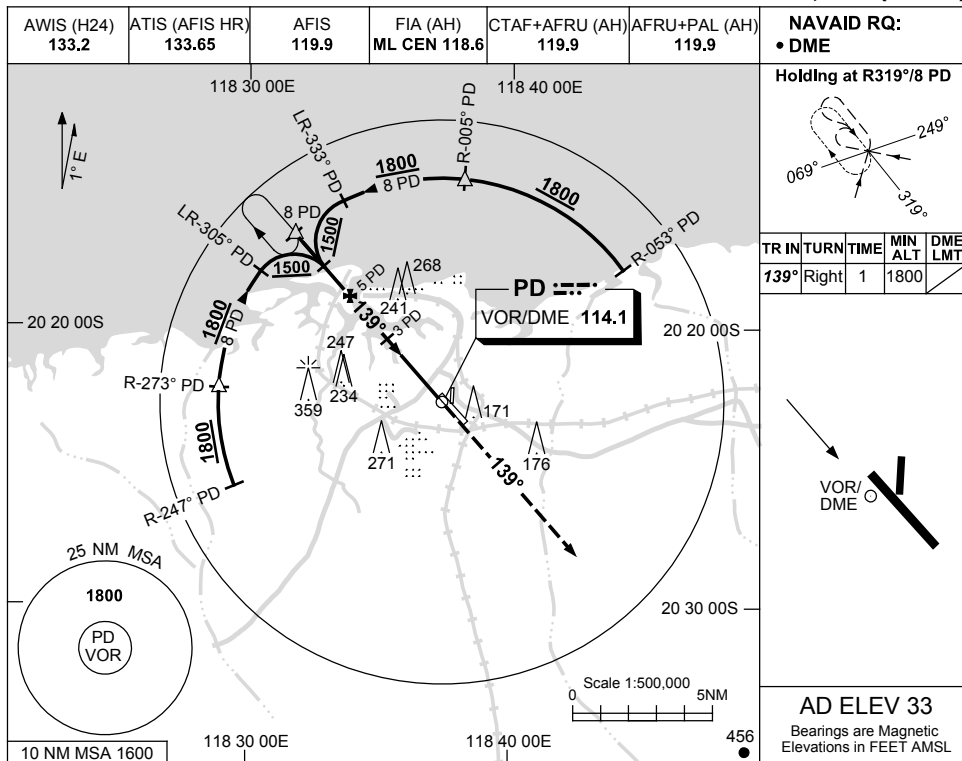


USE QNH

VOR-Z RWY 14

15 AUG 2019

PORT HEDLAND, WA (YPPD)



| CATEGORY | A | B | C | D |
|-------------|----------------------|----------------------|----------------------|---|
| S-I VOR/DME | 550 (527-3.0) | | | |
| CIRCLING | 720 (687-2.4) | 820 (787-4.0) | 860 (827-5.0) | |
| ALTERNATE | (1187-4.4) | (1287-6.0) | (1327-7.0) | |

NOTES
1. MAX IAS:
INITIAL : 210KT.

Changes: COORD FORMAT, SCALE DEPICTION, Editorial.

PPDVO03-160