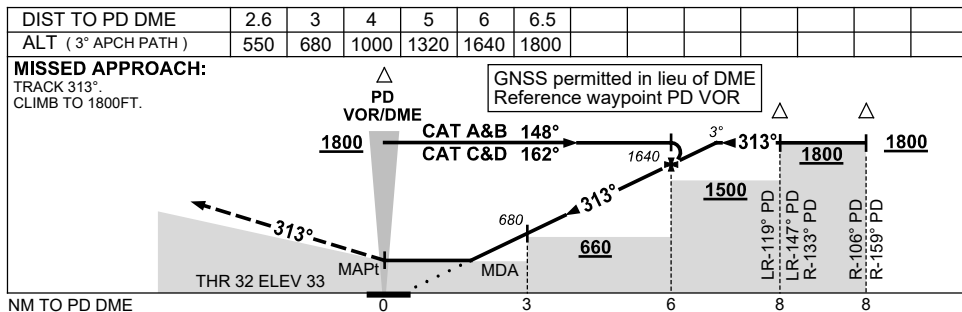
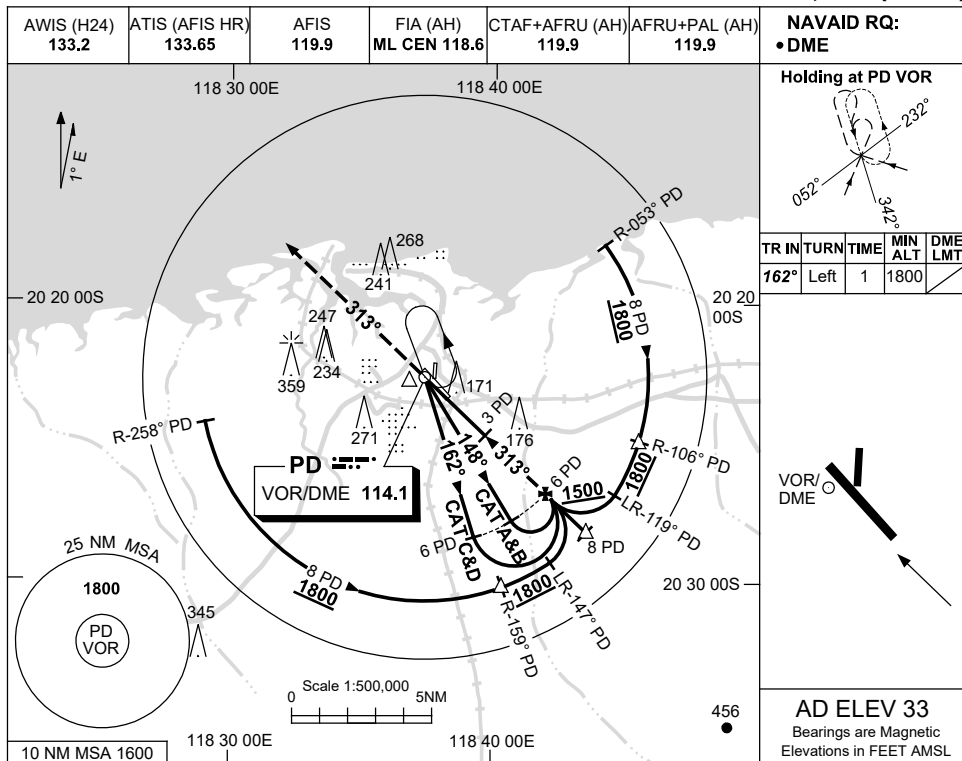


USE QNH

VOR RWY 32

21 MAY 2020

PORT HEDLAND, WA (YPPD)



NOTES

CATEGORY	A	B	C	D
S-I VOR/DME	550 (517-2.9)			
CIRCLING	720 (687-2.4)	820 (787-4.0)	860 (827-5.0)	
ALTERNATE	(1187-4.4)	(1287-6.0)	(1327-7.0)	

1. MAX IAS:
INITIAL : 210KT.

Changes: COORD FMT, Editorial.

PPDVO02-163