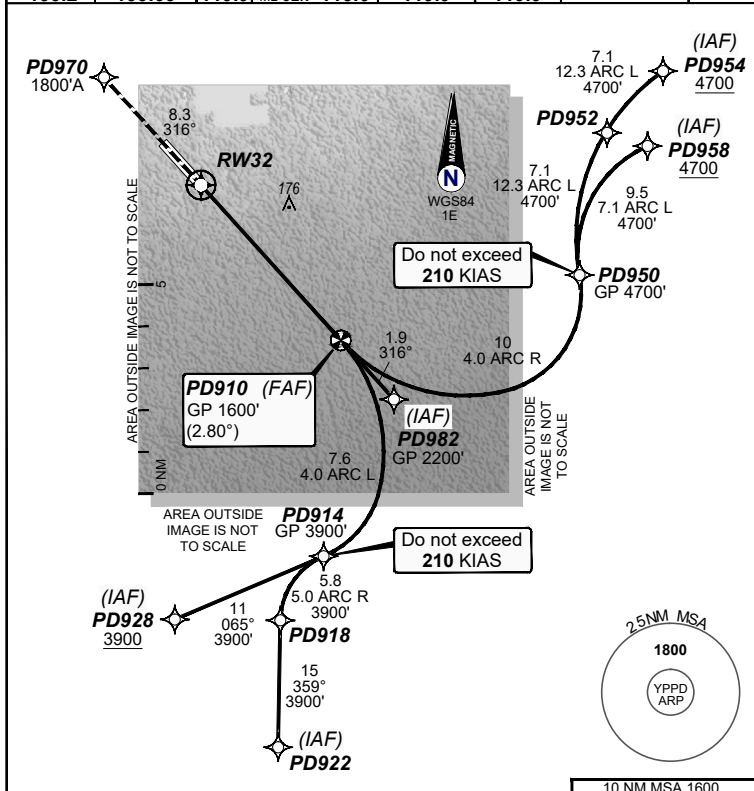


**FOR CASA APPROVED
OPERATORS ONLY
USE QNH**

**RNP U RWY 32 (AR)
PORT HEDLAND, WA (YPPD)**

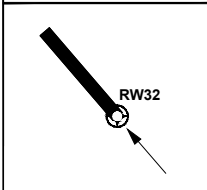
30 NOV 2023

AWIS (H24) 133.2	ATIS (AFIS HR) 133.65	AFIS 119.9	FIA (AH) ML CEN 118.6	CTAF+AFRU (AH) 119.9	AFRU+PAL (AH) 119.9	RNV U 32 THR ELEV 33	RNP AR APCH • RF RQ • YPPD ACT QNH RQ • YPPD ACT TEMP RQ • PROC TEMP RANGE +6°C TO +47°C
----------------------------	---------------------------------	----------------------	---------------------------------	--------------------------------	-------------------------------	--------------------------------	---



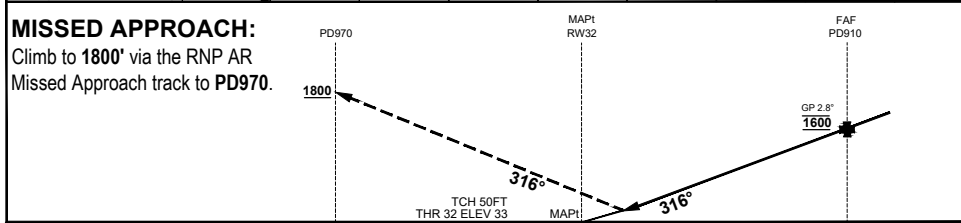
TR	IN	TURN	TIME	MIN	DME
				ALT	LMT

--	--	--	--	--	--



AD ELEV 33
Bearings are Magnetic
Elevations in FEET AMSL

	RW32	0.9	PD910					
ALT (2.8° APCH PATH)		341	1600					



NOTES
1. APCH PATH DOES NOT COINCIDE WITH PAPI 3° GLIDE PATH.

CATEGORY	A	B	C	D
RNP (0.30)			DA(H) 341 (308 - 1.7)	
CIRCLING	N/A		NOT AUTHORISED	
ALTERNATE				

202308030857 COPYRIGHT © GE DIGITAL, 2023. ALL RIGHTS RESERVED. GE PROPRIETARY INFORMATION

Changes: EDITORIAL, RNAV (RNP) TO RNP AR, RNP AR NOTES, PAPI NOTE PPDGN04-177

DO NOT USE FOR NAVIGATION

