

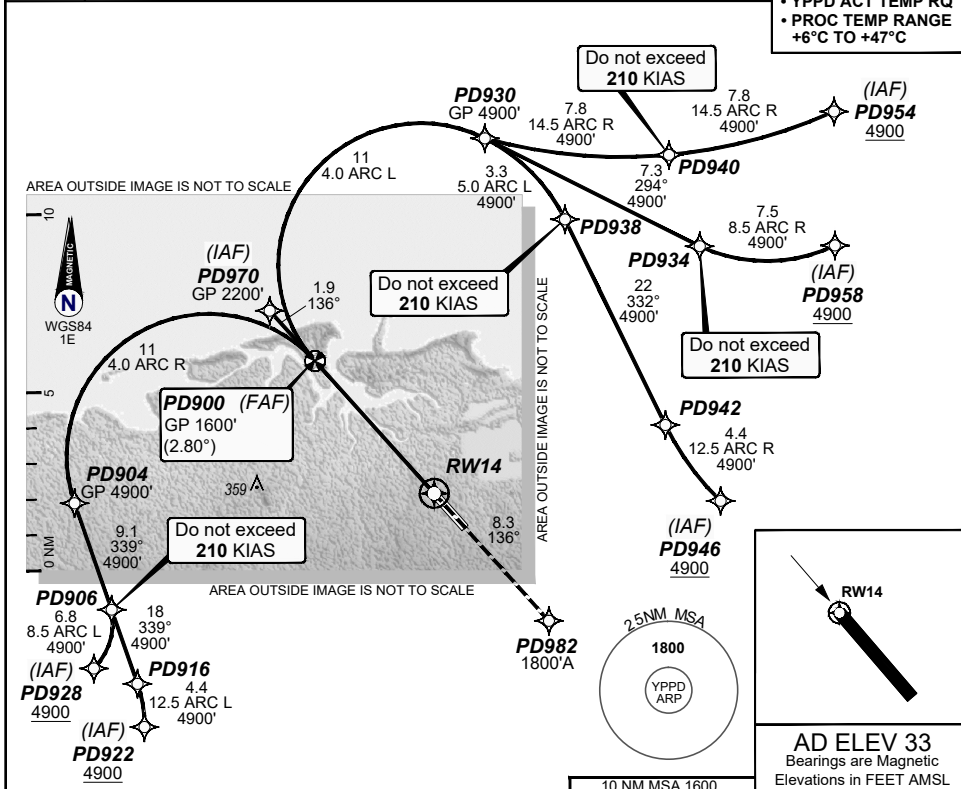
**FOR CASA APPROVED  
OPERATORS ONLY**

RNP U RWY 14 (AR)

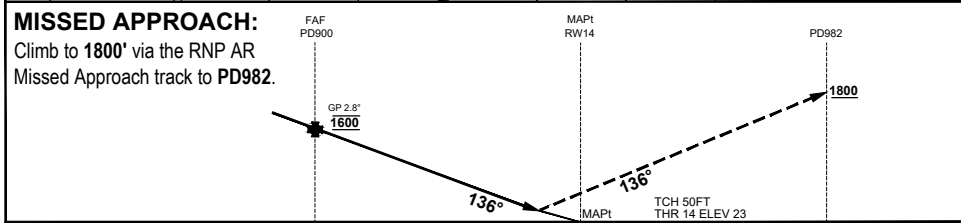
**30 NOV 2023**

**USE QNH PORT HEDLAND, WA (YPPD)**

AWIS (H24)	ATIS (AFIS HR)	AFIS	FIA (AH)	CTAF+AFRU (AH)	AFRU+PAL (AH)	RNP U 14		RNP AR APCH
133.2	133.65	119.9	ML CEN 118.6	119.9	119.9	THR ELEV 23		<ul style="list-style-type: none"> <li>• RF RQ</li> <li>• YPPD ACT QNH RQ</li> <li>• YPPD ACT TEMP RQ</li> <li>• PROC TEMP RANGE +6°C TO +47°C</li> </ul>



	PD900	0.9	RW14					
<b>ALT (2.8° APCH PATH)</b>	1600	327						



**NOTES**  
1. APCH PATH DOES NOT COINCIDE WITH PAPI 3° GLIDE PATH.

CATEGORY	A	B	C	D
RNP (0.30)			DA(H) 327 (304 - 1.6)	
CIRCLING	N/A		NOT AUTHORISED	
ALTERNATE				

202308030857 COPYRIGHT © GE DIGITAL, 2023. ALL RIGHTS RESERVED. GE PROPRIETARY INFORMATION

Changes: EDITORIAL, RNAV (RNP) TO RNP AR, RNP AR NOTES, PAPI NOTE PDGNG03-177

**DO NOT USE FOR NAVIGATION**

© Airservices Australia

Prepared by GE Aviation

