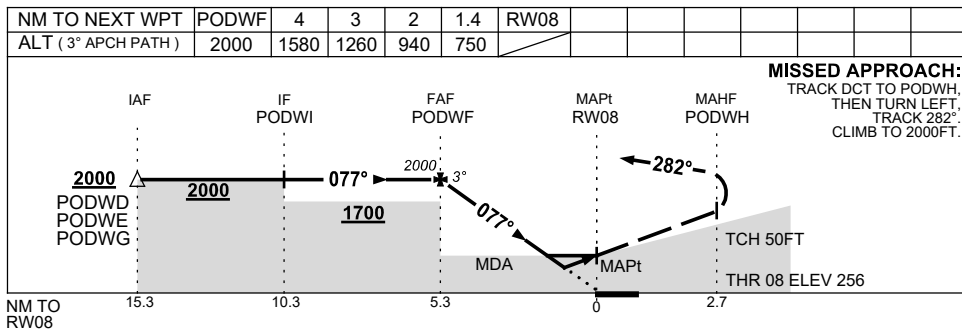
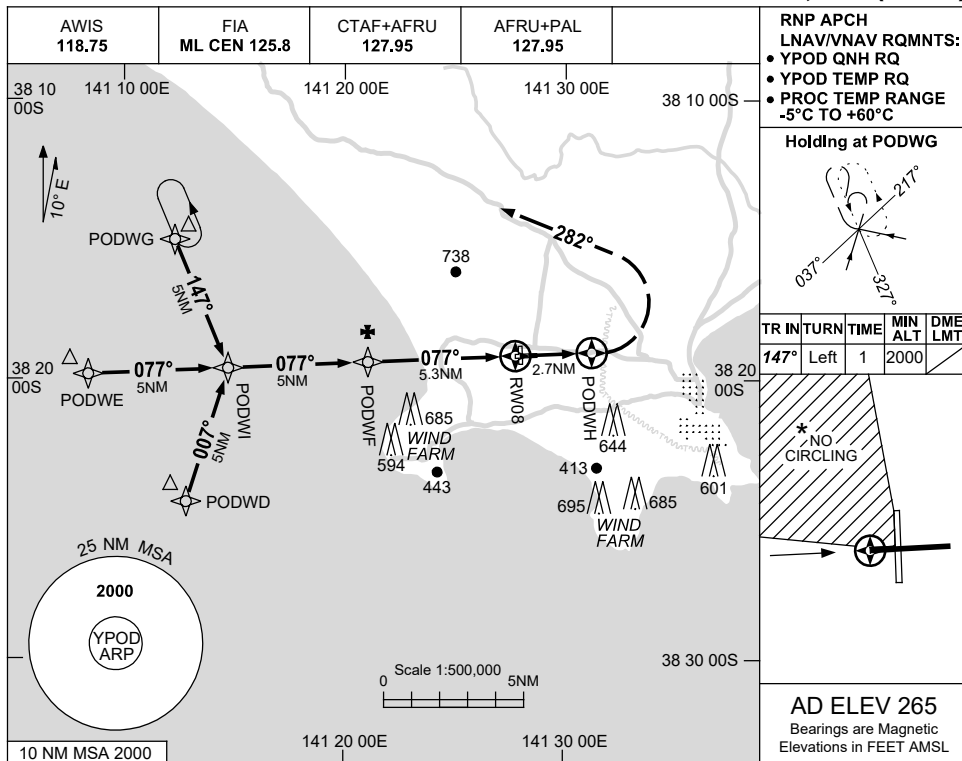


USE QNH

RNP RWY 08  
**PORTLAND, VIC (YPOD)**

15 JUN 2023



**NOTES**

CATEGORY	A	B	C	D
LNAV/VNAV	750 (494-2.8)			NOT APPLICABLE
LNAV	940 (684-3.9)			
CIRCLING *	940 (675-2.4)		1180 (915-4.0)	
ALTERNATE	(1175-4.4)		(1415-6.0)	

- MAX IAS:  
INITIAL : 210KT.
- \* 2. NO CIRCLING IN SECTOR NW OF RWY 08/26 AND RWY 17/35.

Changes: CHART TITLE, PBN SPECIFICATION BOX, Editorial.

PODGN01-175