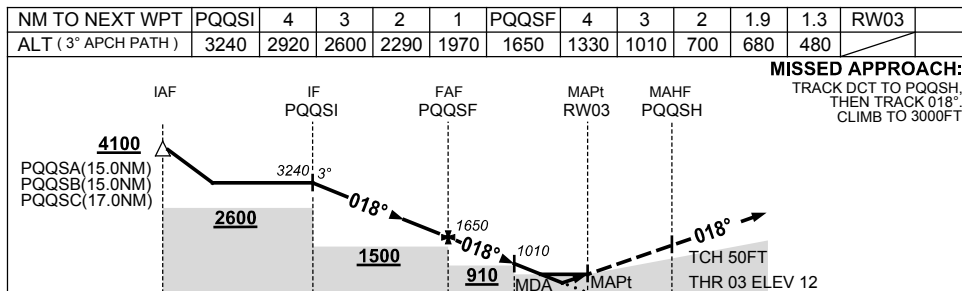
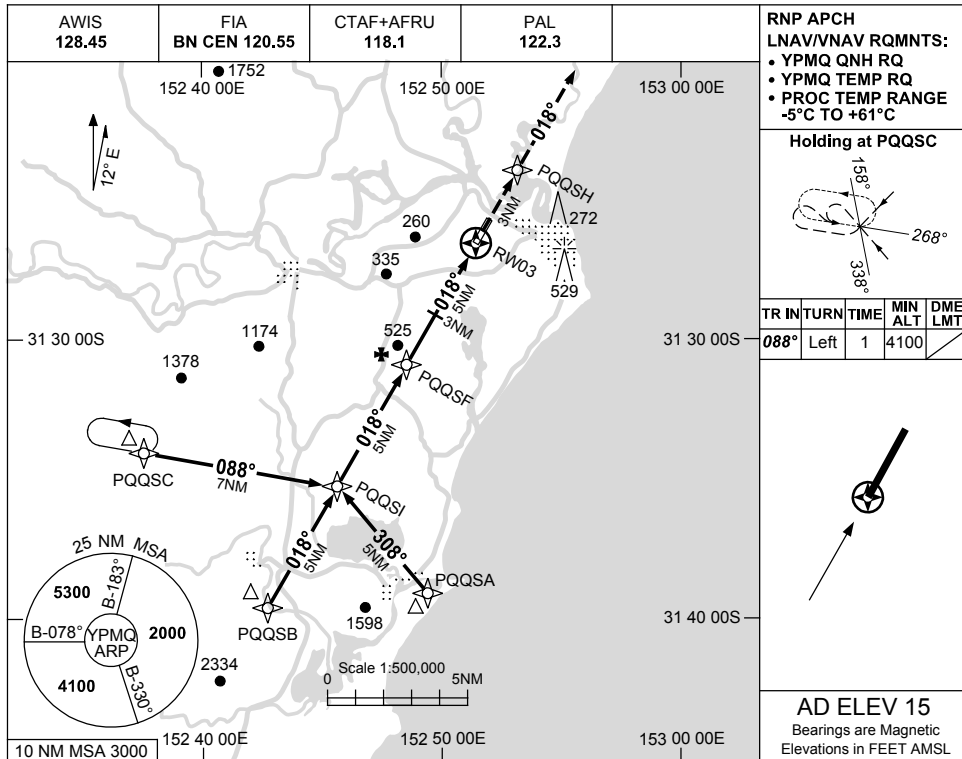


USE QNH

RNP RWY 03

30 NOV 2023

PORT MACQUARIE, NSW (YPMQ)



NOTES

CATEGORY	A	B	C	D
LNAV/VNAV		480 (468-2.6)		NOT APPLICABLE
LNAV		680 (665-3.8)		
CIRCLING	850 (835-2.4)		1030 (1015-4.0)	
ALTERNATE	(1335-4.4)		(1515-6.0)	

- MAX IAS:
INITIAL : 210KT.
- CAUTION:**
HOLDING PATTERN
IS OVERLAID BY
TAREE RNP RWY 22.

Changes: DELETED R574, NEW LOGO, Editorial.

PMQGN01-177