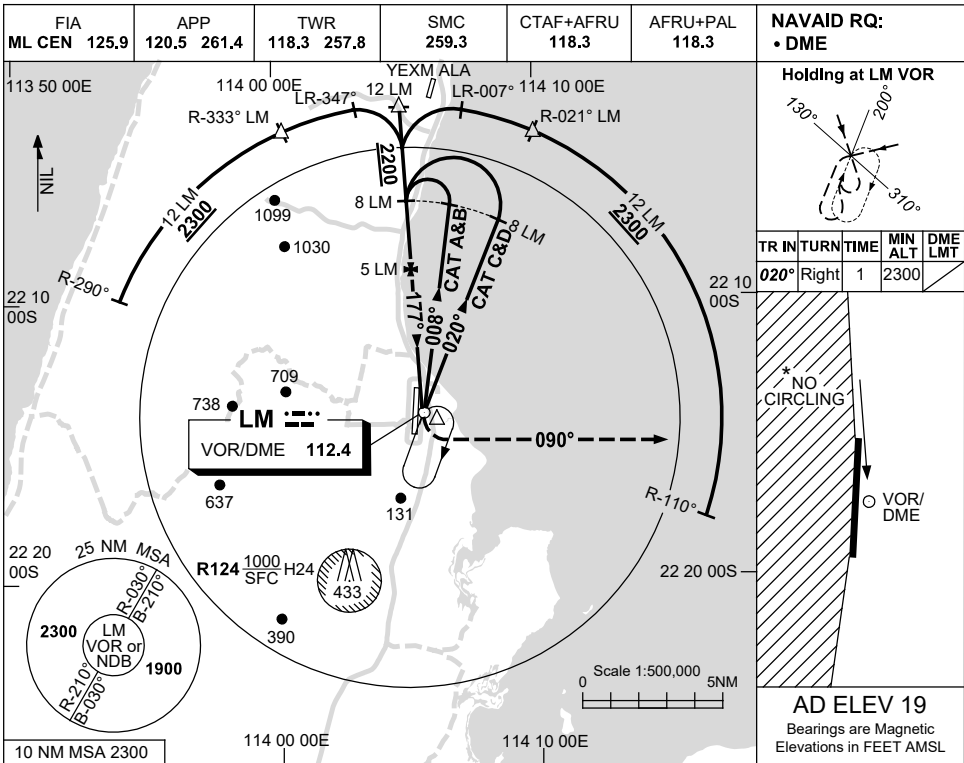


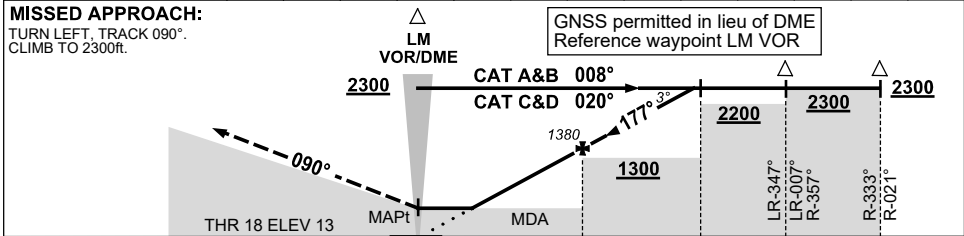
USE QNH

VOR RWY 18
LEARMONTH, WA (YPLM)

21 MAR 2024



DIST TO LM DME	2.4	3	4	5	6	7	7.9						
ALT (3° APCH PATH)	550	740	1060	1380	1700	2010	2300						



NM TO LM DME

CATEGORY	A	B	C	D
S-I VOR/DME	550 (531-3.0)			
CIRCLING *	660 (641-2.4)	760 (741-4.0)	810 (791-5.0)	
ALTERNATE	(1141-4.4)		(1241-6.0) (1291-7.0)	

- NOTES**
- MAX IAS:
INITIAL : 210KT.
HOLDING : 210KT.
 - NO CIRCLING WEST OF RWY 18/36.
 - AWIS (PHONE)
08 6216 2623

Changes: YEXM ALA, Editorial.

PLMVO01-178