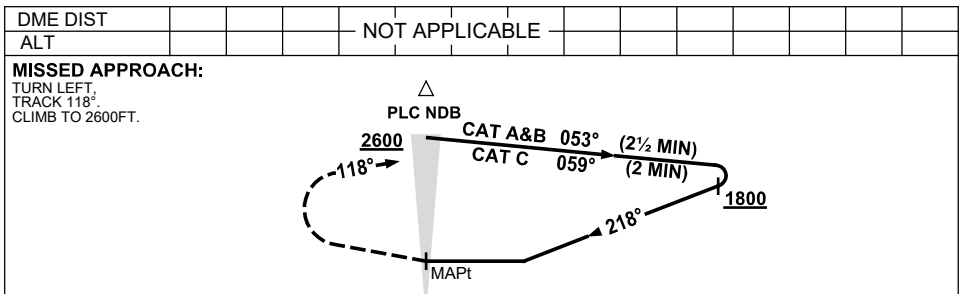
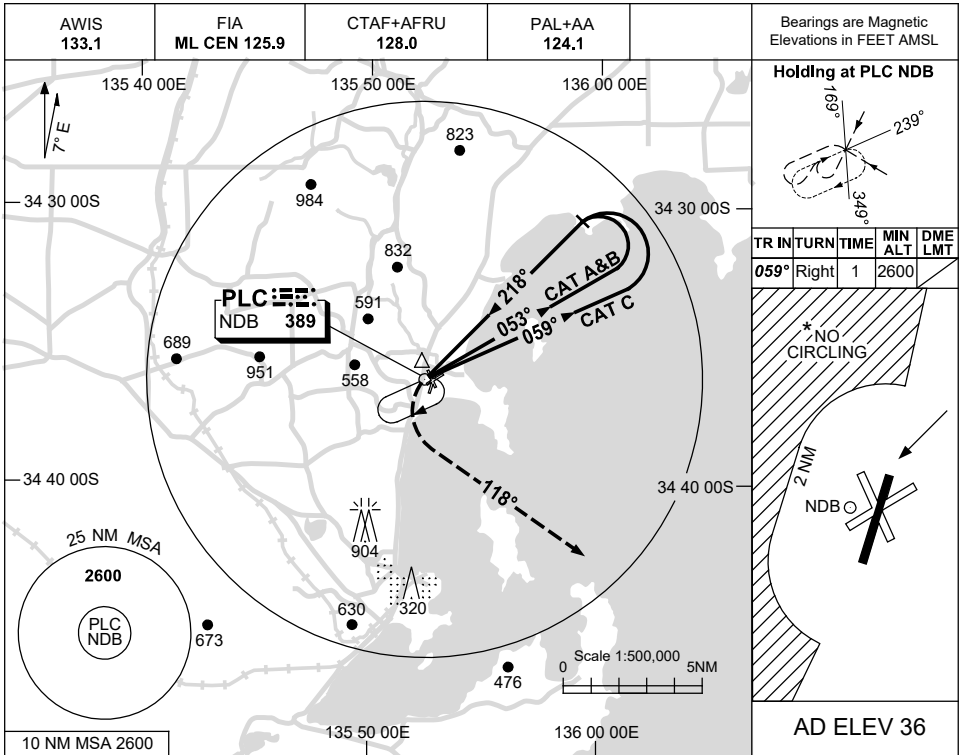


USE QNH

NDB-A

16 JUN 2022

**PORT LINCOLN, SA (YPLC)**



**NOTES**

CATEGORY	A	B	C	D
				NOT APPLICABLE
CIRCLING *	1040 (1004-2.4)		1210 (1174-4.0)	
ALTERNATE	(1504-4.4)		(1674-6.0)	

1. MAX IAS:  
INITIAL :  
CAT C 180KT.
- \*2. NO CIRCLING WEST OF RWY 01/19 BEYOND 2NM.

Changes: PAL+AA.

PLCNB01-171