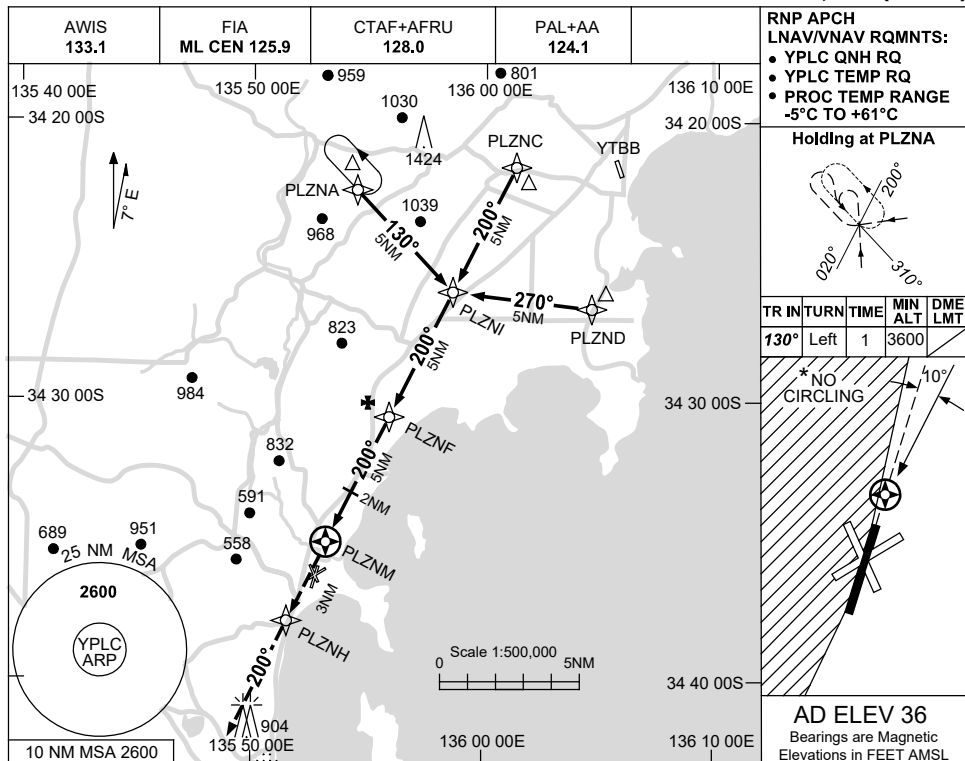


USE QNH

RNP RWY 19

PORT LINCOLN, SA (YPLC)

1 DEC 2022



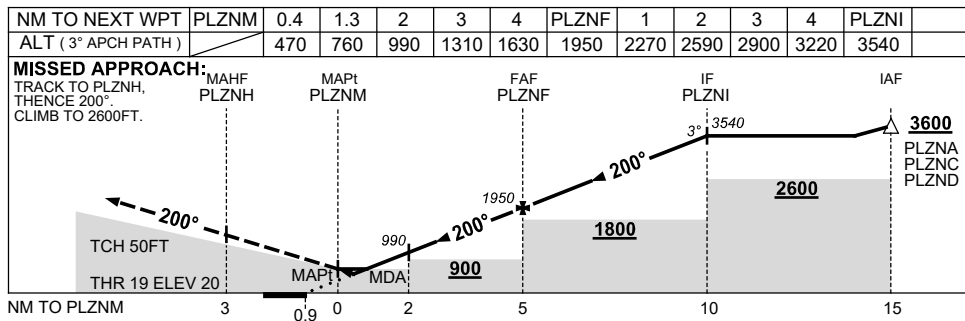
RNP APCH LNAV/VNAV RQMNTS:

- YPLC QNH RQ
- YPLC TEMP RQ
- PROC TEMP RANGE -5°C TO +61°C

Holding at PLZNA

TR IN	TURN	TIME	MIN ALT	DME LMT
130°	Left	1	3600	

AD ELEV 36
Bearings are Magnetic Elevations in FEET AMSL



NOTES

CATEGORY	A	B	C	D
LNAV/VNAV		470 (450-2.5)		NOT APPLICABLE
LNAV		760 (740-4.2)		
CIRCLING*	1040 (1004-2.4)		1210 (1174-4.0)	
ALTERNATE	(1504-4.4)		(1674-6.0)	

- MAX IAS:
HOLDING: 210KT.
INITIAL : 210KT.
- NO CIRCLING WEST OF RWY 01/19.
- HOLDING AND INITIAL OVER-LIES TUMBY BAY RNP PROC.

Changes: CHART TITLE, PBN SPECIFICATION BOX.

PLCGN01-173