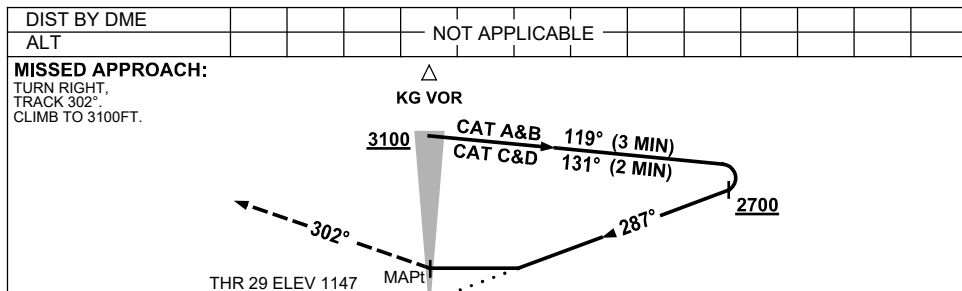
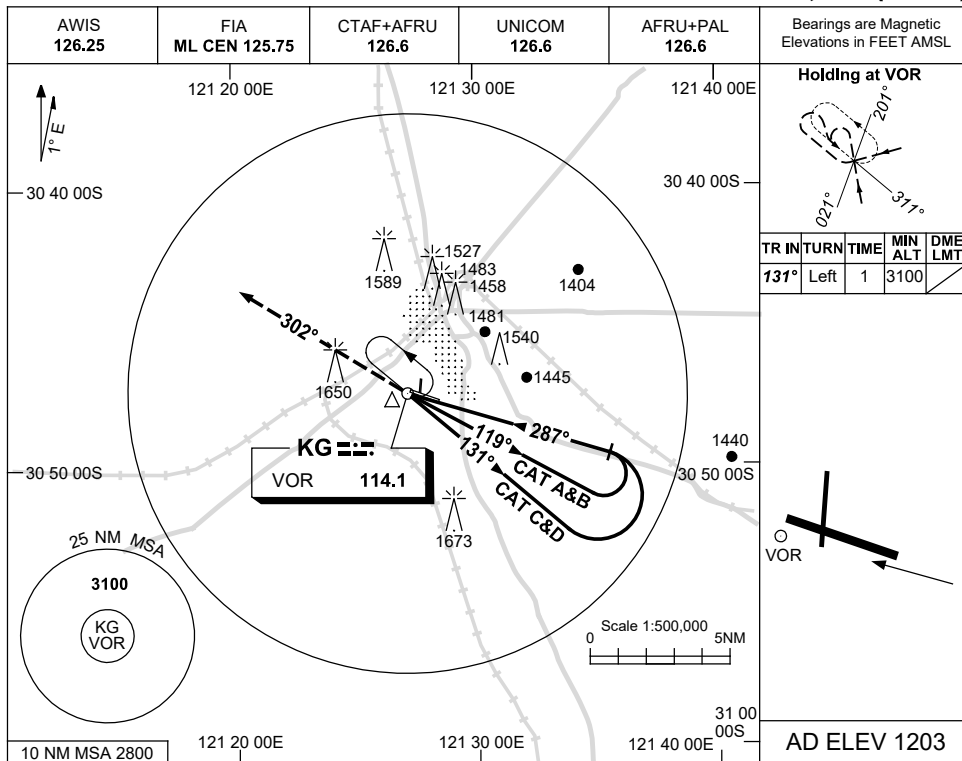


USE QNH

VOR-Y RWY 29

**KALGOORLIE-BOULDER, WA (YPKG)**

13 JUN 2024



**NOTES**

CATEGORY	A	B	C	D
S-I VOR	<b>1960</b> (813-4.6)			
CIRCLING	<b>2060</b> (857-2.4)	<b>2160</b> (957-4.0)	<b>2190</b> (987-5.0)	
ALTERNATE	(1357-4.4)	(1457-6.0)	(1487-7.0)	

1. MAX IAS:  
INITIAL :  
CAT C&D 210KT.
- CAUTION:**  
1650FT RADIO MAST  
2.5NM 280° KG  
VOR/DME.

Changes: CAT A/B MAX SPEED REMOVED, MAGNETIC HEADING, COORD FORMAT, Editorial.

PKGVO07-179