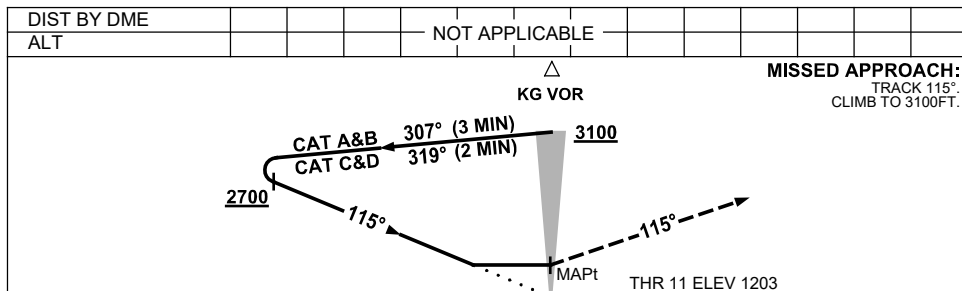
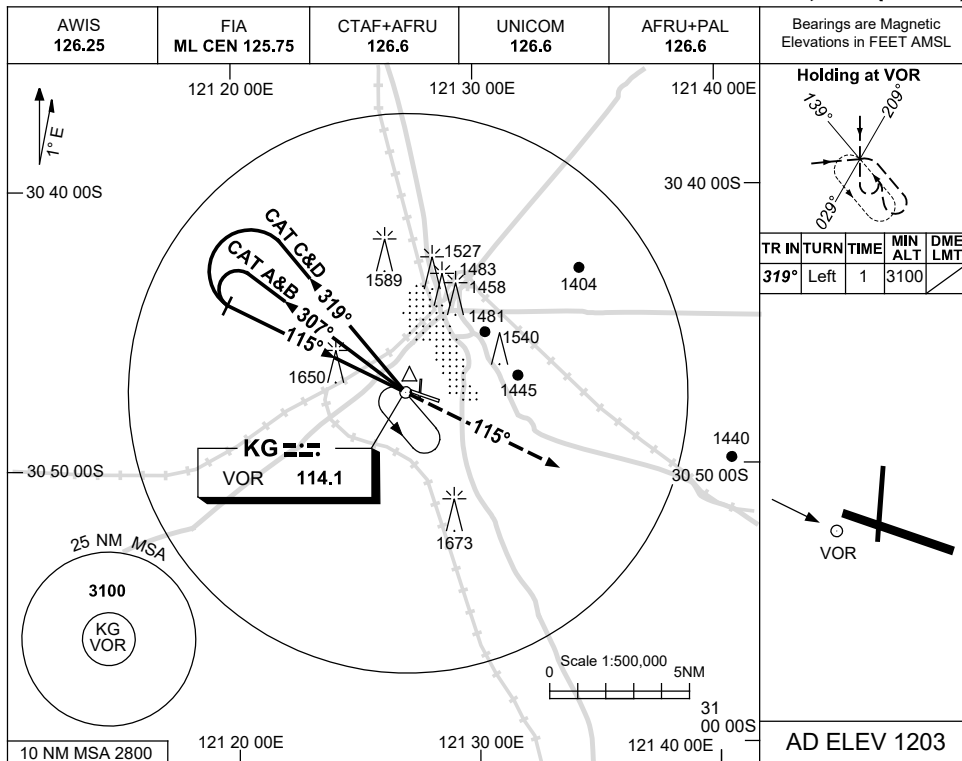


USE QNH

VOR-Y RWY 11

KALGOORLIE-BOULDER, WA (YPKG)

13 JUN 2024



NOTES

- MAX IAS:
INITIAL :
CAT C&D 210KT.
CAUTION:
1650FT RADIO MAST
2.5NM 280° KG VOR/
DME ON RWY APCH
PATH.

CATEGORY	A	B	C	D
S-I VOR	2030 (827-4.7)			
CIRCLING	2060 (857-2.4)	2160 (957-4.0)	2190 (987-5.0)	
ALTERNATE	(1357-4.4)	(1457-6.0)	(1487-7.0)	

Changes: CAT A/B MAX SPEED REMOVED, COORD FORMAT.

PKGVO05-179