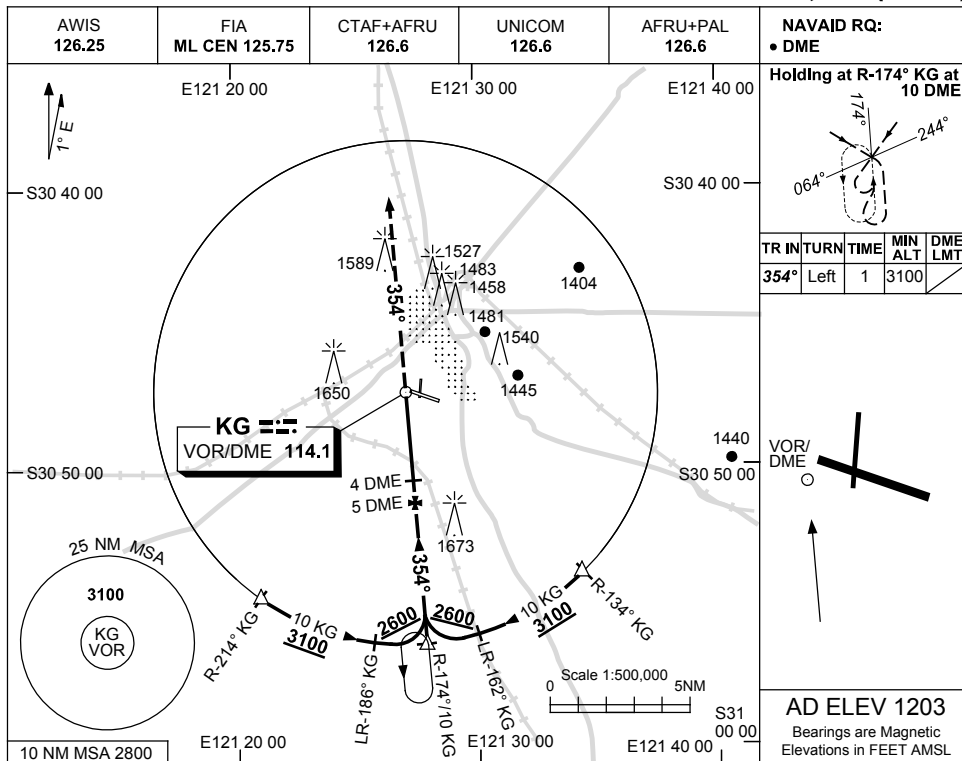


USE QNH

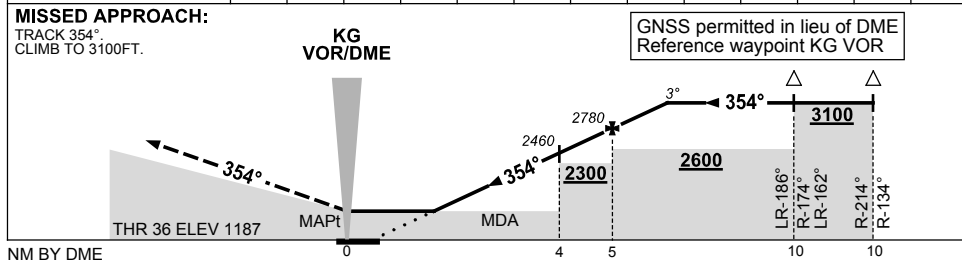
VOR-Z RWY 36

2 MAR 2017

KALGOORLIE-BOULDER, WA (YPKG)



DIST BY DME	1.9	2	3	4	5	6								
ALT (3° APCH PATH)	1780	1820	2150	2460	2780	3100								



NOTES

CATEGORY	A	B	C	D
S-I VOR/DME	1780 (593-3.4)		NOT APPLICABLE	
CIRCLING	2060 (857-2.4)			
ALTERNATE	(1357-4.4)			

1. MAX IAS:
INITIAL : 210KT.
CAUTION
1650FT RADIO MAST
2.5NM 280° KG
VOR/DME.

Changes: 1650FT TWR.

PKGVO04-150