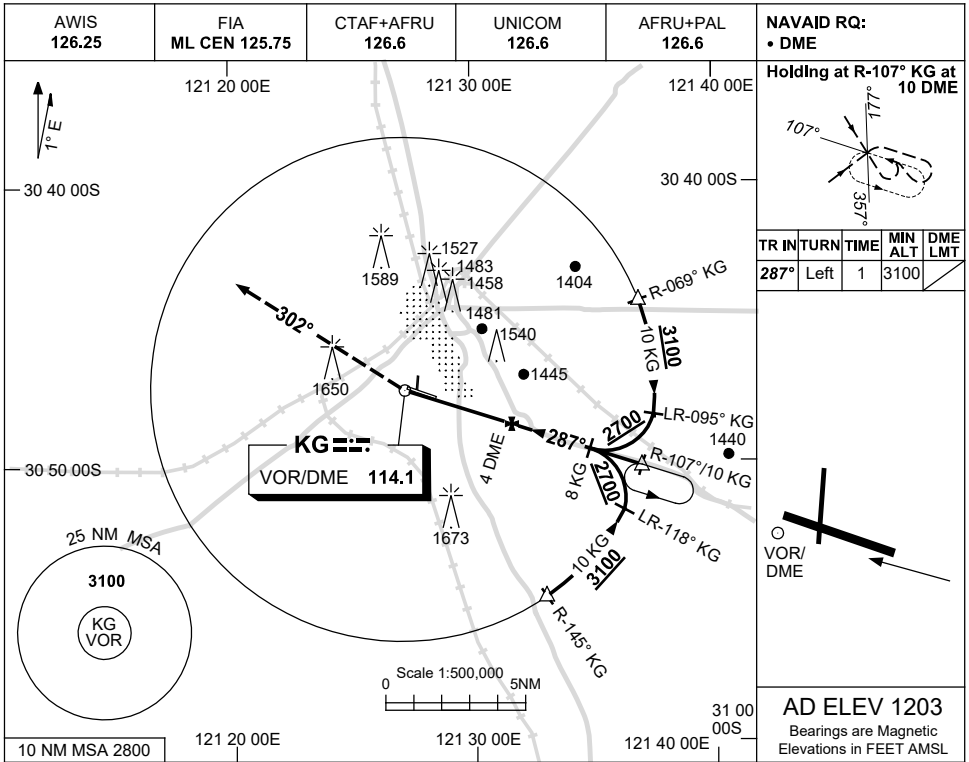


USE QNH

VOR-Z RWY 29

**KALGOORLIE-BOULDER, WA (YPKG)**

13 JUN 2024

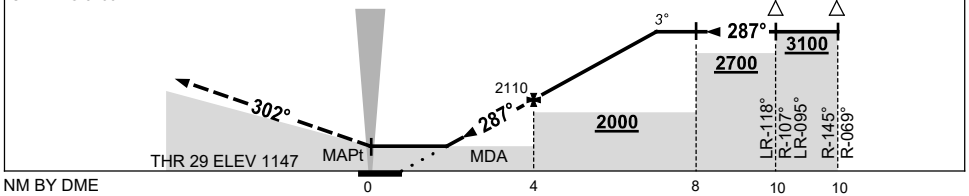


|                    |      |      |      |      |      |      |  |  |  |  |  |  |
|--------------------|------|------|------|------|------|------|--|--|--|--|--|--|
| DIST BY DME        | 3    | 4    | 5    | 6    | 7    | 7.1  |  |  |  |  |  |  |
| ALT (3° APCH PATH) | 1780 | 2110 | 2430 | 2740 | 3060 | 3100 |  |  |  |  |  |  |

**MISSED APPROACH:**

TURN RIGHT,  
TRACK 302°.  
CLIMB TO 3100FT.

GNSS permitted in lieu of DME  
Reference waypoint KG VOR



**NOTES**

- MAX IAS:  
INITIAL : 210KT.
- CAUTION:**  
1650FT RADIO MAST  
2.5NM 280° KG  
VOR/DME.

| CATEGORY    | A                     | B | C                     | D                     |
|-------------|-----------------------|---|-----------------------|-----------------------|
| S-I VOR/DME | <b>1780 (633-3.6)</b> |   |                       |                       |
| CIRCLING    | <b>2060 (857-2.4)</b> |   | <b>2160 (957-4.0)</b> | <b>2190 (987-5.0)</b> |
| ALTERNATE   | (1357-4.4)            |   | (1457-6.0)            | (1487-7.0)            |

Changes: S-I VOR/DME MINIMA, DIST-ALT TABLE, MAGNETIC HEADING, COORD FORMAT, Editorial.

PKGVO03-179