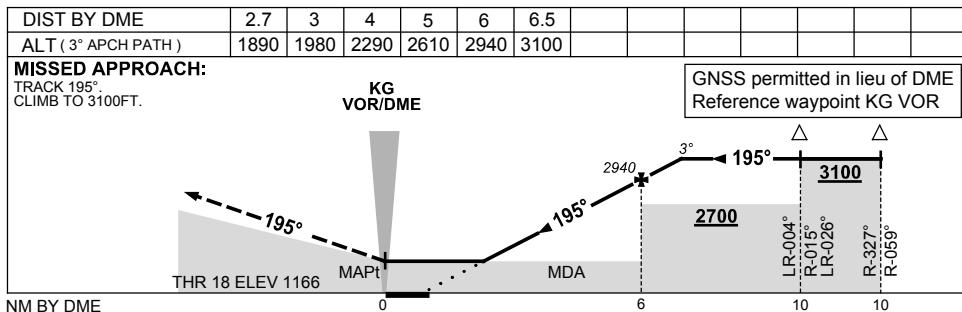
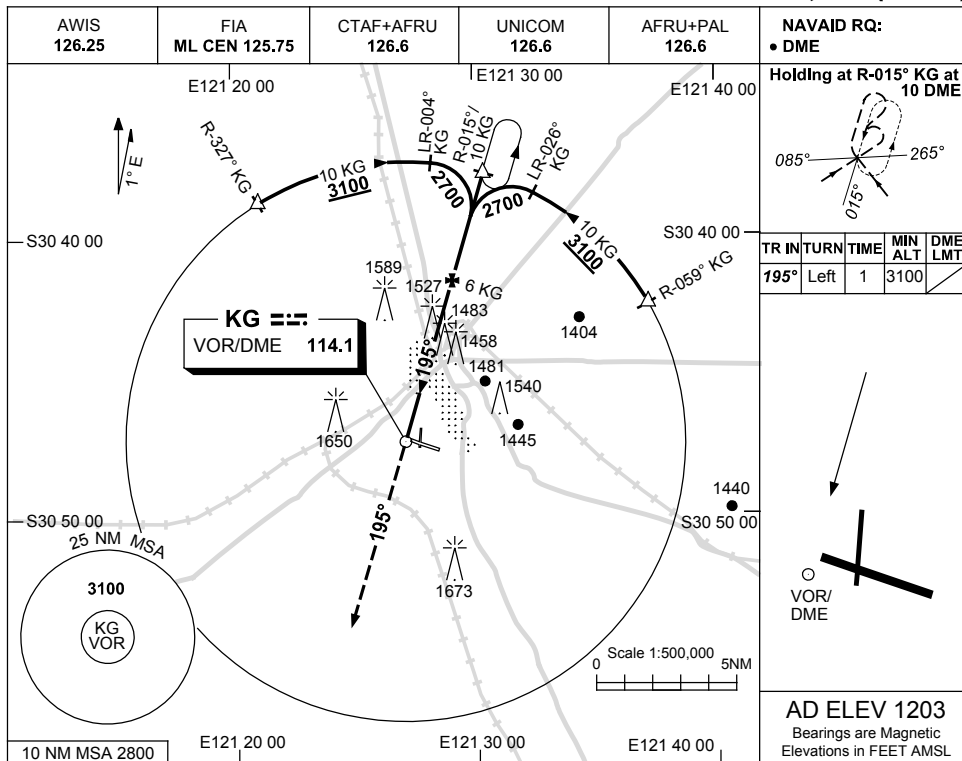


USE QNH

VOR-Z RWY 18

9 NOV 2017

KALGOORLIE-BOULDER, WA (YPKG)



CATEGORY	A	B	C	D
S-I VOR/DME	1890 (724-4.1)		NOT APPLICABLE	
CIRCLING	2060 (857-2.4)			
ALTERNATE	(1357-4.4)			

NOTES

1. MAX IAS:
INITIAL : 210KT.

CAUTION:
1650FT RADIO MAST
2.5NM 280° KG
VOR/DME.

Changes: DIST/ALT TABLE.

PKGVO02-153