

USE QNH

RNP U RWY 29 (AR)

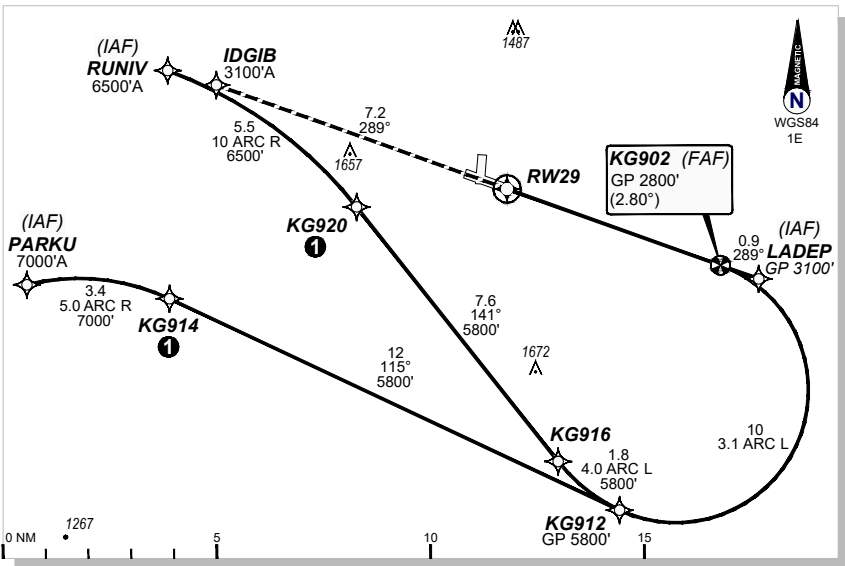
KALGOORLIE-BOULDER (YPKG)

7 SEP 2023

AWIS 126.25	FIA ML CEN 125.75	CTAF + AFRU 126.6	UNICOM 126.6	AFRU + PAL 126.6	RNP AR APCH -RF RQ -YPKG ACT QNH RQ -YPKG ACT TEMP RQ -PROCE TEMP RANGE -2°C TO +46°C
RNP AR RNV U 29	Apt Elev. 1203' TDZE 1147'	KG902 (FAF) GP 2800' (2.80°)	Trans Level FL110		

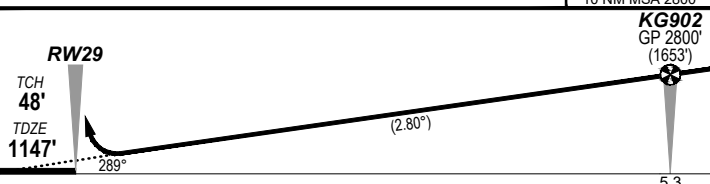
GE PROPRIETARY INFORMATION

① Latest position where the aircraft can join the procedure.



MISSED APPROACH:

Climb to 3100' via the RNP AR
Missed Approach track to IDGIB.



NOTES:

- 1. Minimum MAP gradient (AE) 3.8% to 3100 FT.

		RNP 0.20	RNP 0.30
		DA(H) 1429' (282)	DA(H) 1503' (356')
C	C	1500m	2000m

FOR CASA APPROVED OPERATORS ONLY

202305171434COP/RIGHT 2023 NAVERUS, INC. USA

Changes: PROC NAME, RNAV (RNP) to RNP AR, Added PBN BOX, Removed Note 2, Removed background image.

PKGKN06-176

DO NOT USE FOR NAVIGATION

