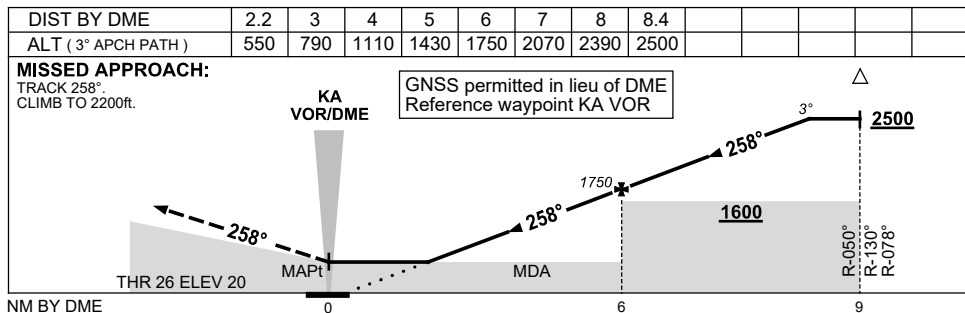
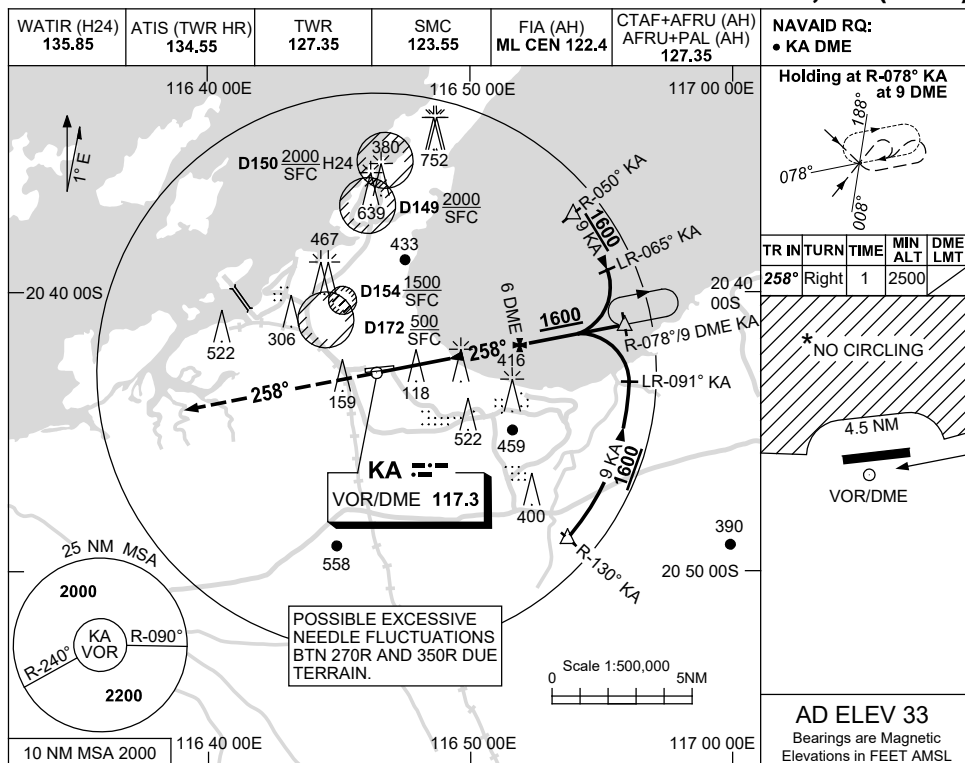


USE QNH

VOR-Z RWY 26

20 MAR 2025

KARRATHA, WA (YPKA)



CATEGORY	A	B	C	D
S-I VOR/DME	550 (530-3.0)			
CIRCLING *	860 (827-2.4)	1090 (1057-4.0)	1090 (1057-5.0)	
ALTERNATE	(1327-4.4)	(1557-6.0)	(1557-7.0)	

NOTES

- MAX IAS: INITIAL : 210KT.
- D154 MAYBE IN USE WITHOUT NOTAM PROMULGATION.
- *3. NO CIRCLING N OF RWY 08 / 26 BEYOND 4.5NM.

Changes: THR ELEV, MDH.

PKAVO02-182