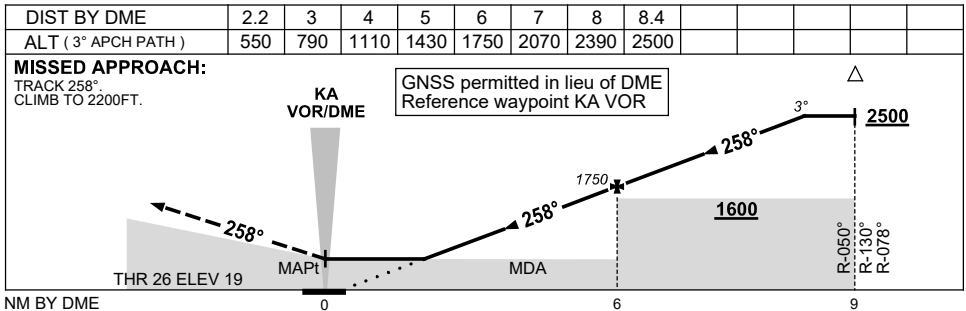
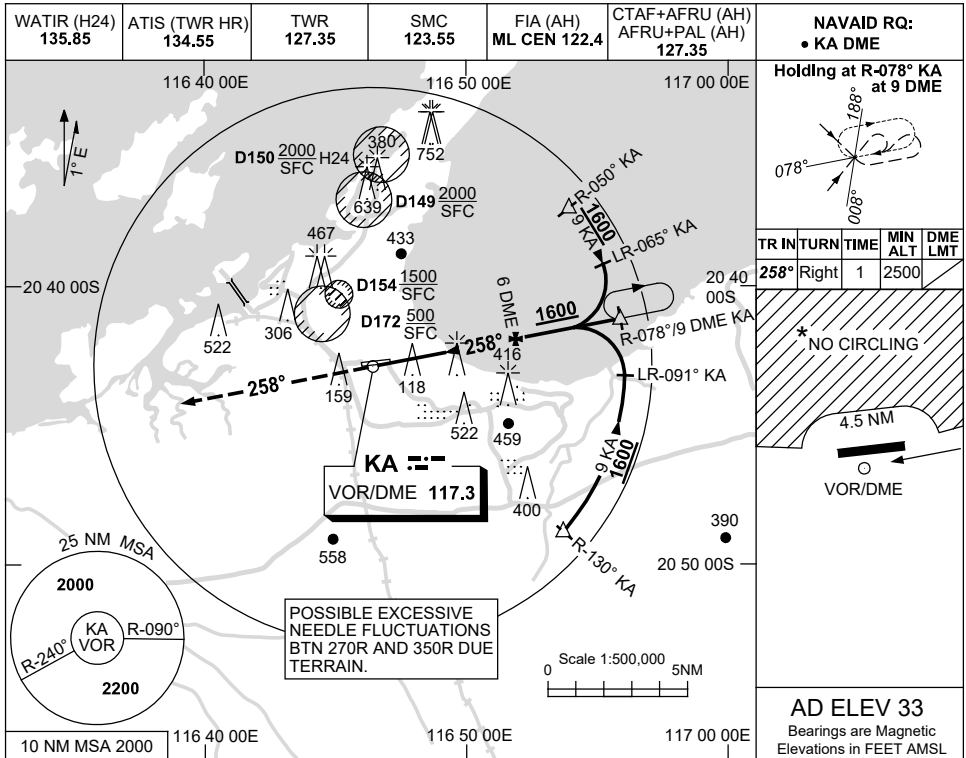


USE QNH

VOR-Z RWY 26

5 NOV 2020

**KARRATHA, WA (YPKA)**



**NOTES**

CATEGORY	A	B	C	D
S-I VOR/DME	<b>550 (531-3.0)</b>			
CIRCLING *	<b>860 (827-2.4)</b>		<b>1090 (1057-4.0)</b>	
ALTERNATE	(1327-4.4)		(1557-7.0)	

1. MAX IAS:  
INITIAL : 210KT.
2. D154 MAYBE IN USE WITHOUT NOTAM PROMULGATION.
- \*3. NO CIRCLING N OF RWY 08/26 BEYOND 4.5NM.

Changes: THR AND AD ELEV, GRID COORD FORMAT.

PKAV002-165