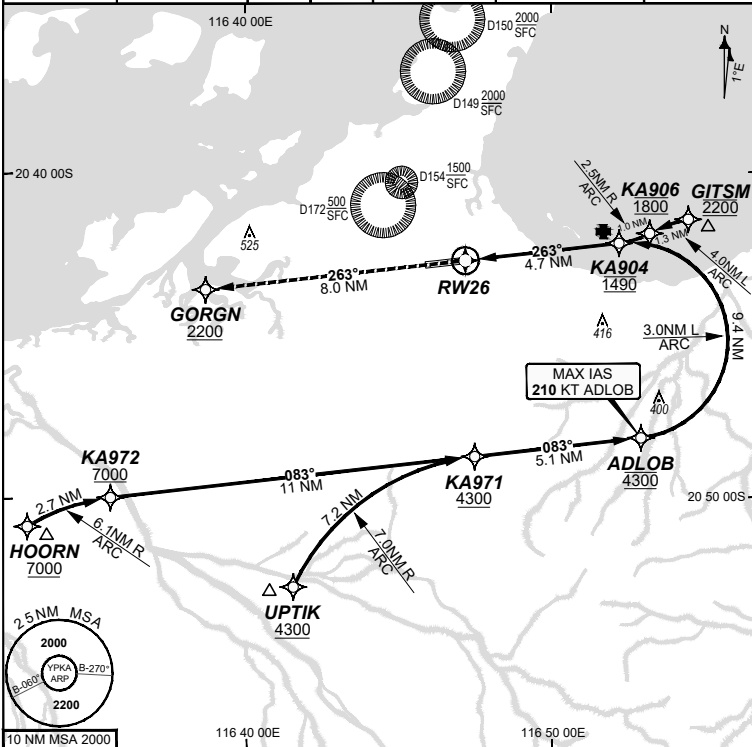


**FOR CASA APPROVED
OPERATORS ONLY
USE QNH**

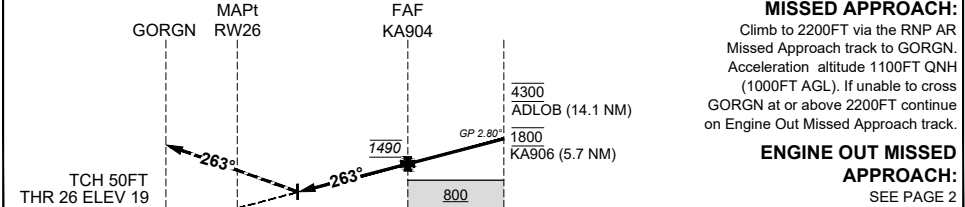
13 JUN 2024

WATIR (H24) 135.85	ATIS (TWR HR) 134.55	TWR 127.35	SMC 123.55	FIA (AH) ML CEN 122.4	CTAF+AFRU (AH) AFRU+PAL (AH) 127.35	RNV U 26 THR ELEV 19	RNP AR APCH - RF RQ - YPKA ACT QNH RQ - YPKA ACT TEMP RQ - PROC TEMP RANGE +8°C TO +46°C
------------------------------	--------------------------------	----------------------	----------------------	---------------------------------	--	--------------------------------	--



Holding as directed by ATC					
TR	IN	TURN	TIME	MIN ALT	DME LMT
AD ELEV 33 Bearings are Magnetic Elevations in FEET AMSL					

ALT (2.80° APCH PATH)	RW26	0.7	KA904	KA906	ADLOB		
		269	1490	1800	4300		



ENGINE OUT MISSED APPROACH: SEE PAGE 2
NM FM THR

CATEGORY	A	B	C	D
RNP (0.30)			DA(H) 269 (250 - 1.3)	DA(H) 269 (250 - 1.3)
CIRCLING		N/A	NOT AUTHORISED	NOT AUTHORISED
ALTERNATE				

NOTES

- Lateral transition to MAP must not be initiated prior to DA/H PSN.
- APCH Path does not coincide with PAPI glide path 3°.
- MIN MAP GRAD (AE) for RNP 0.30 4.0% to 2200 FT.

202401301033 COPYRIGHT 2024 GE AEROSPACE. ALL RIGHTS RESERVED. GE PROPRIETARY INFORMATION
Changes: GE Aerospace name revision, MCNAB to UPTIK, SWENI to ADLOB. PKAGN04-179

DO NOT USE FOR NAVIGATION

