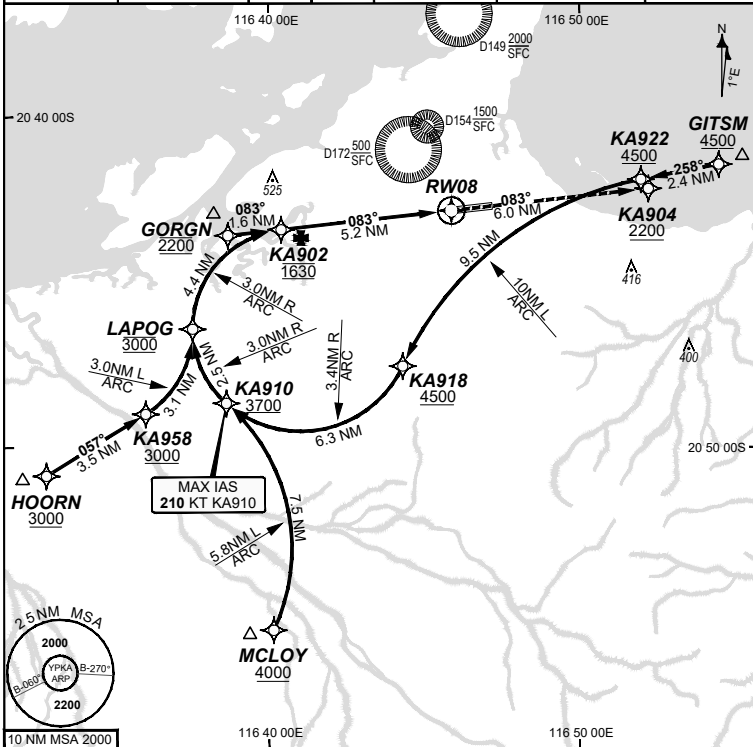


**FOR CASA APPROVED
OPERATORS ONLY**

13 JUN 2024

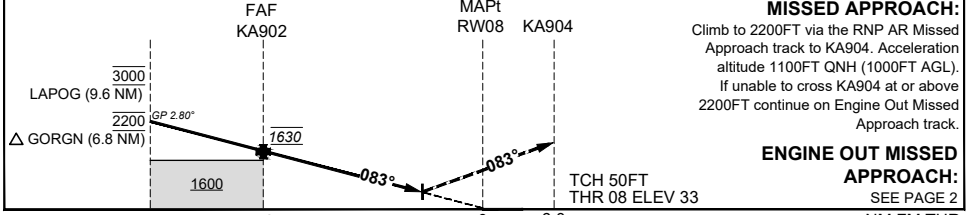
USE QNH

WATIR (H24) 135.85	ATIS (TWR HR) 134.55	TWR 127.35	SMC 123.55	FIA (AH) ML CEN 122.4	CTAF+AFRU (AH) AFRU+PAL (AH) 127.35	RNV U 08 THR ELEV 33	RNP AR APCH - RF RQ - YPKA ACT QNH RQ - YPKA ACT TEMP RQ - PROC TEMP RANGE +8°C TO +46°C
------------------------------	--------------------------------	----------------------	----------------------	---------------------------------	--	--------------------------------	--



Holding as directed by ATC					
TR	IN	TURN	TIME	MIN	DME
AD ELEV 33 Bearings are Magnetic Elevations in FEET AMSL					

ALT (2.80° APCH PATH)	LAPOG	GORGN	KA902	0.7	RW08			
	3000	2200	1630	297				



CATEGORY	A	B	C	D
RNP (0.30)			DA(H) 297 (264 - 1.4)	DA(H) 297 (264 - 1.4)
		N/A		
CIRCLING			NOT AUTHORISED	NOT AUTHORISED
ALTERNATE				

- NOTES**
- Lateral transition to MAP must not be initiated prior to DA/H PSN.
 - APCH Path does not coincide with PAPI glide path 3°.
 - MIN MAP GRAD (AE) for RNP 0.30 5.1% to 2200 FT.

202401261509 COPYRIGHT 2024 GE AEROSPACE. ALL RIGHTS RESERVED. GE PROPRIETARY INFORMATION
Changes: GE Aerospace name revision, MURAY to LAPOG. PKAGN03-179

DO NOT USE FOR NAVIGATION
Prepared by GE Aerospace

