

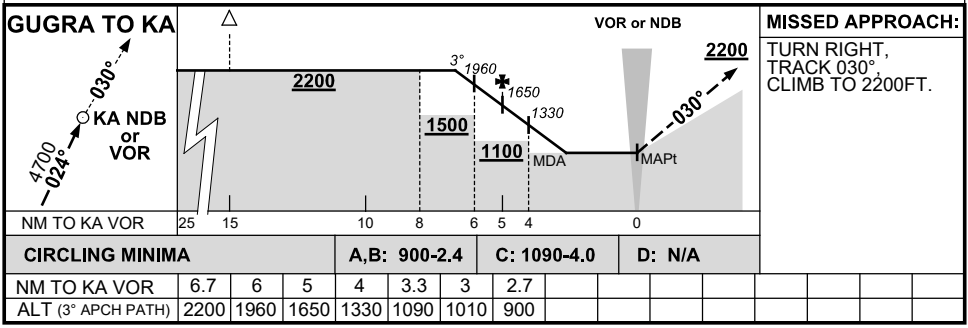
DME or GNSS ARRIVAL PROCEDURES KARRATHA, WA (YPKA) Page 3

13 JUN 2024

WATIR (H24) 135.85	ATIS (TWR HR) 134.55	TWR 127.35	SMC 123.55	FIA (AH) ML CEN 122.4	CTAF+AFRU (AH) AFRU+PAL (AH) 127.35	Bearings are Magnetic Elevations in FEET AMSL
-----------------------	-------------------------	---------------	---------------	--------------------------	---	--

**DME USING KA DME
REFERENCE WAYPOINT KA VOR**

AD ELEV 33



Changes: GUGRA REPLACES VETEL.

PKADG03-179