

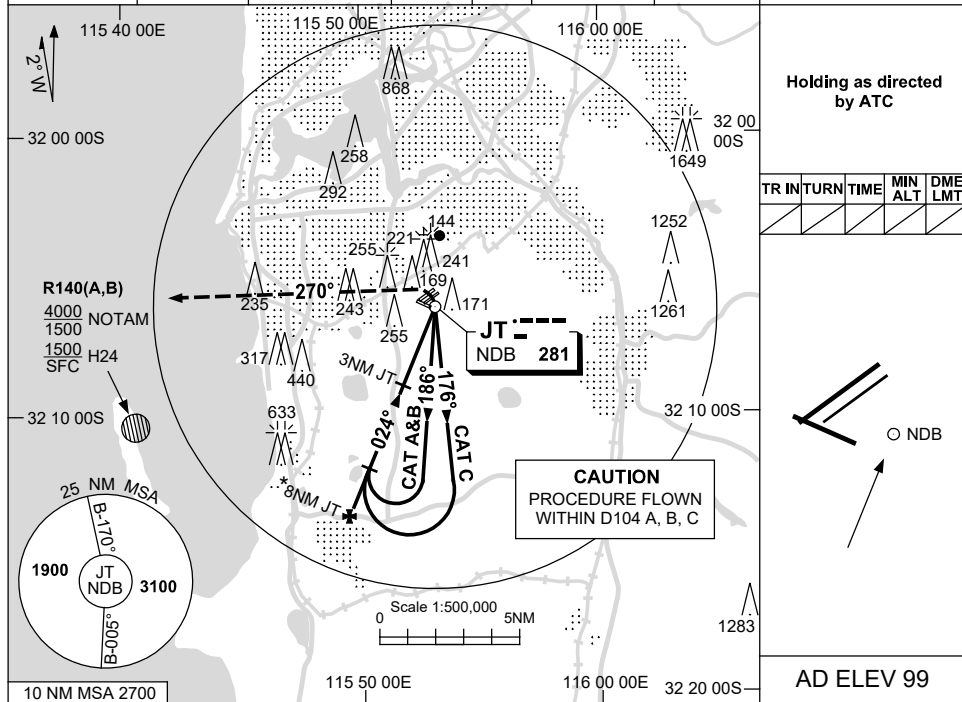
USE QNH

NDB-B

16 JUN 2022

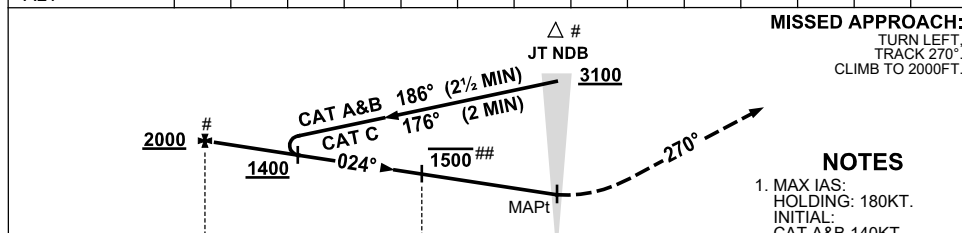
PERTH/JANDAKOT, WA (YPJT)

ATIS (AWIS AH) 128.65 281	APP (PH) 123.6 132.95	TWR (CTAF+AFRU AH) 118.1	DEP (PH) 118.7	SMC 124.3	FIA PH CEN 135.25	PAL+AA (AH) 123.9	Bearings are Magnetic Elevations in FEET AMSL
------------------------------	--------------------------	-----------------------------	-------------------	--------------	----------------------	----------------------	--



Holding as directed by ATC				
TR IN	TURN	TIME	MIN ALT	DME LMT
AD ELEV 99				

DME DIST	NOT APPLICABLE			
ALT				



MISSED APPROACH:
TURN LEFT,
TRACK 270°.
CLIMB TO 2000FT.

NOTES

- MAX IAS:
HOLDING: 180KT.
INITIAL:
CAT A&B 140KT.
CAT C 180KT.
- ACFT MAY BE RADAR VECTORED TO FAF BY RAS.
- ACFT TO CONTACT JT TOWER BEFORE DESCENT BELOW 2000FT WHEN CTR ACTIVATED.
- ACFT ARE TO REACH 1500FT OR BELOW AS SOON AS PRACTICABLE WHEN ESTABLISHED INBOUND.

NM TO JT NDB 8 3

CATEGORY	A	B	C	D
CIRCLING #	800 (701-2.4)		880 (781-4.0)	NOT APPLICABLE
ALTERNATE	(1201-4.4)		(1281-6.0)	

Changes: 241FT LIT OBST PJTNB02-171