

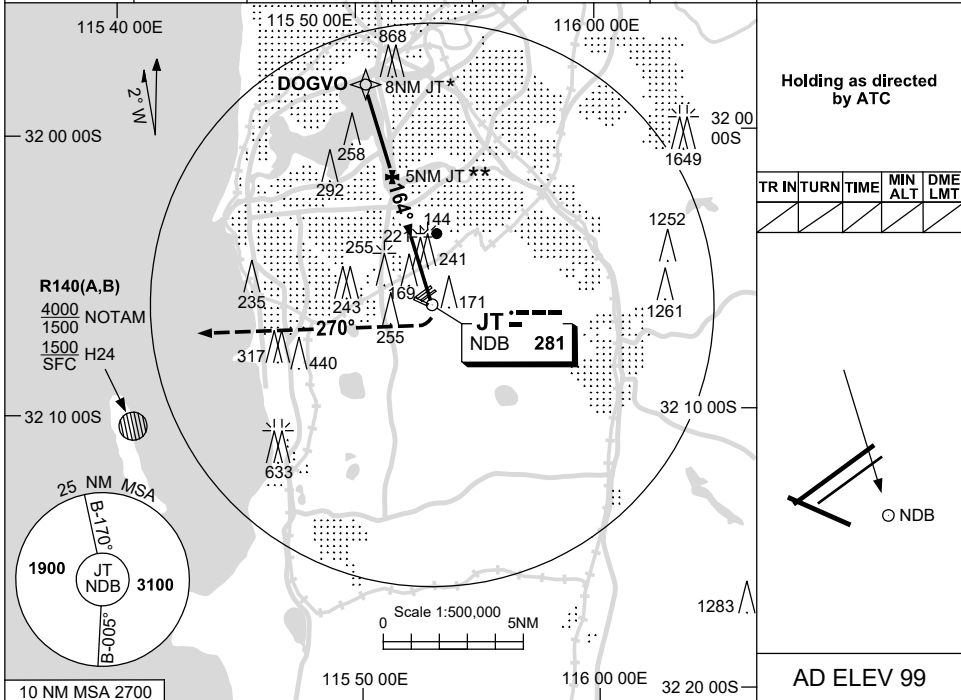
USE QNH

NDB-A

30 NOV 2023

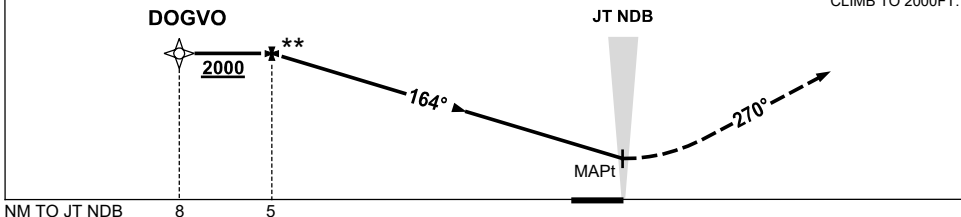
PERTH/JANDAKOT, WA (YPJT)

ATIS (AWIS AH) 128.65 281	APP (PH) 123.6 132.95	TWR (CTAF+AFRU AH) 118.1	DEP (PH) 118.7	SMC 124.3	FIA PH CEN 135.25	PAL+AA (AH) 123.9	Bearings are Magnetic Elevations in FEET AMSL
------------------------------	--------------------------	-----------------------------	-------------------	--------------	----------------------	----------------------	--



DME DIST													
ALT	NOT APPLICABLE												

**MISSED APPROACH:**  
TURN RIGHT,  
TRACK 270°  
CLIMB TO 2000FT.



**NOTES**

- \*1. ACFT WILL BE RADAR VECTORED TO INTERCEPT FINAL TRACK BETWEEN 8NM & 5NM JT.
- \*\*2. WHEN ESTABLISHED RADAR WILL ADVISE DESCENT CLEARANCE FROM 2000FT, INSIDE 5NM JT.

CATEGORY	A	B	C	D
				NOT APPLICABLE
CIRCLING	800 (701-2.4)		880 (781-4.0)	
ALTERNATE	(1201-4.4)		(1281-6.0)	

Changes: DOGVO REPLACES PARKS, Editorial.

PJTNB01-177