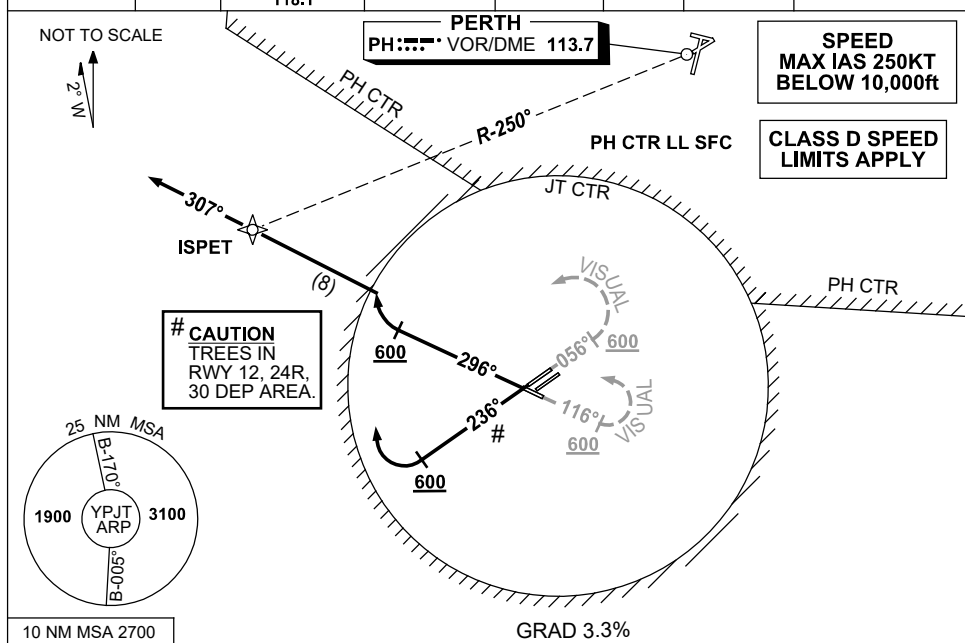


**STANDARD INSTRUMENT DEPARTURES (SID)
ISPET ONE DEP - RUNWAYS WEST
PERTH/JANDAKOT, WA (YPJT)**

15 JUN 2023

ATIS (AWIS AH) 128.65 281	SMC 124.3	TWR (CTAF+AFRU AH) 118.1	FIA PH CEN 135.25	APP (PH) 123.6 132.95	DEP (PH) 118.7	PAL+AA (AH) 123.9	Bearings are Magnetic. Elevations in FEET AMSL
------------------------------	--------------	--------------------------------	----------------------	--------------------------	-------------------	----------------------	---



ISPET ONE DEPARTURE
PROC NOT AVBL FROM RWY 06R/24L

- RWY 06L (VISUAL) (RNAV)**
- Track 056°
 - After passing 600ft turn LEFT visually to intercept and track 307° to ISPET
 - Continue tracking 307° thence as cleared.

- RWY 12 (VISUAL) (RNAV)**
- Track 116°
 - After passing 600ft turn LEFT visually to intercept and track 307° to ISPET
 - Continue tracking 307° thence as cleared.

- REQUIREMENTS RWY 06L, RWY 12:**
- Minimum Cloud Base 700ft
 - ACFT must remain VISUAL within Jandakot CTR (3NM from ARP) until the end of initial turn.
 - Visual segment terminated when established on track to intercept 307° to ISPET. Cross JT CTR boundary AT or ABV 700ft

- RWY 24R (RNAV)**
- Track 236°
 - After passing 600ft turn RIGHT to intercept and track 307° to ISPET
 - Continue tracking 307° thence as cleared.

- RWY 30 (RNAV)**
- Track 296°
 - After passing 600ft turn RIGHT to intercept and track 307° to ISPET
 - Continue tracking 307° thence as cleared.

COMMUNICATIONS FAILURE PROCEDURE

- On recognition of communications failure
- Squawk 7600
 - Maintain procedure track for two minutes, and
 - CLIMB IF NECESSARY TO MINIMUM SAFE ALTITUDE, to maintain terrain clearance, then
 - Proceed in accordance with the latest ATC route clearance acknowledged.

Changes: CHART TITLE, WPT ISPET.

PJTDPO2-175