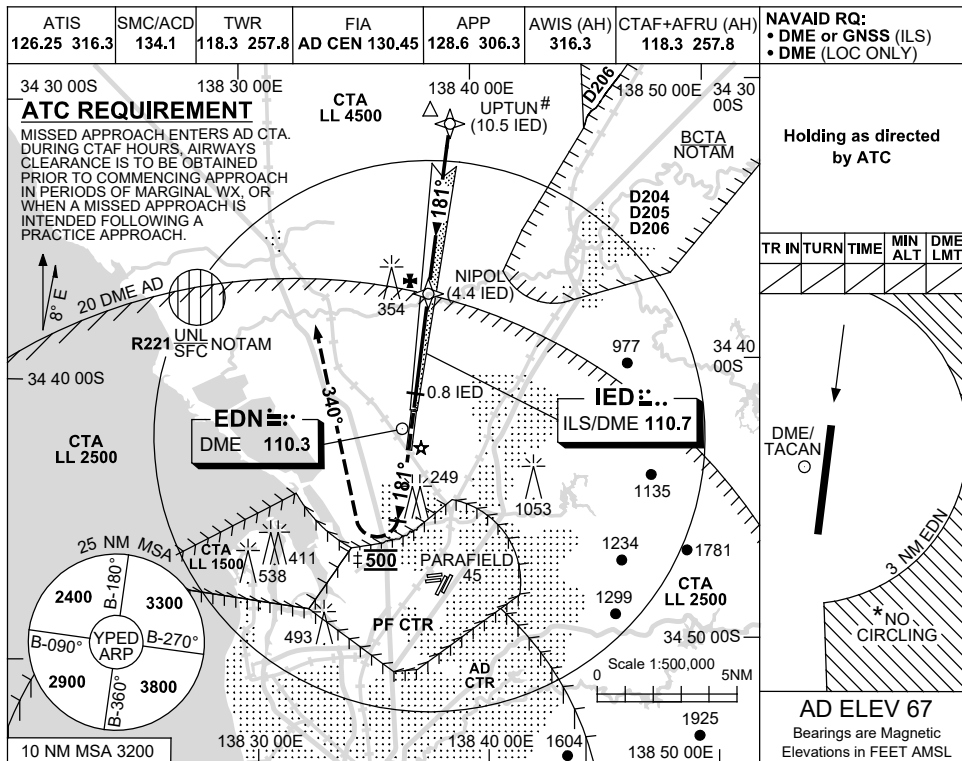


USE QNH

ILS-Z or LOC-Z RWY 18
EDINBURGH, SA (YPED)

21 MAR 2024



Holding as directed by ATC

TR IN	TURN	TIME	MIN ALT	DME LMT

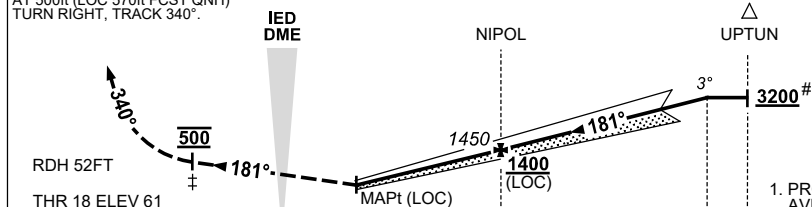
DME/TACAN

AD ELEV 67
Bearings are Magnetic
Elevations in FEET AMSL

NM TO IED DME	1.6	2	3	4	NIPOL	5	6	7	8	9	9.9		
ALT (3° APCH PATH)	570	690	1010	1330	1450	1650	1970	2280	2600	2920	3200		

MISSED APPROACH:

TRACK 181°, CLIMB TO 3200ft.
AT 500ft (LOC 570ft FCST QNH)
TURN RIGHT, TRACK 340°.



NM TO IED DME	0	0.8	4.4	9.9	10.5
NM TO THR 18	0	0.6	4.2	9.8	10.4

- NOTES**
- PROCEDURE NOT AVBL WHEN R221 ACT UNLESS AUTHORISED BY ATC.
 - MAX IAS:
INITIAL : 210KT.
MISSED APPROACH : 180KT.
TURN : 180KT.
 - NO CIRCLING E OF RWY 18/36 BEYOND 3NM EDN.
 - ACFT MAY BE RADAR VECTORED TO IAF (UPTUN) AT 3200ft.
- ±5. 570ft (LOC FCST QNH).

CATEGORY	A	B	C	D
S-I ILS		380 (319)	1.0	
S-I LOC #		570 (503-2.1)		
CIRCLING *	800 (733-2.4)		850 (783-4.0)	890 (823-5.0)
ALTERNATE	(1233-4.4)		(1283-6.0)	(1323-7.0)

Changes: VISIBILITY, Editorial.

PEDI101-178