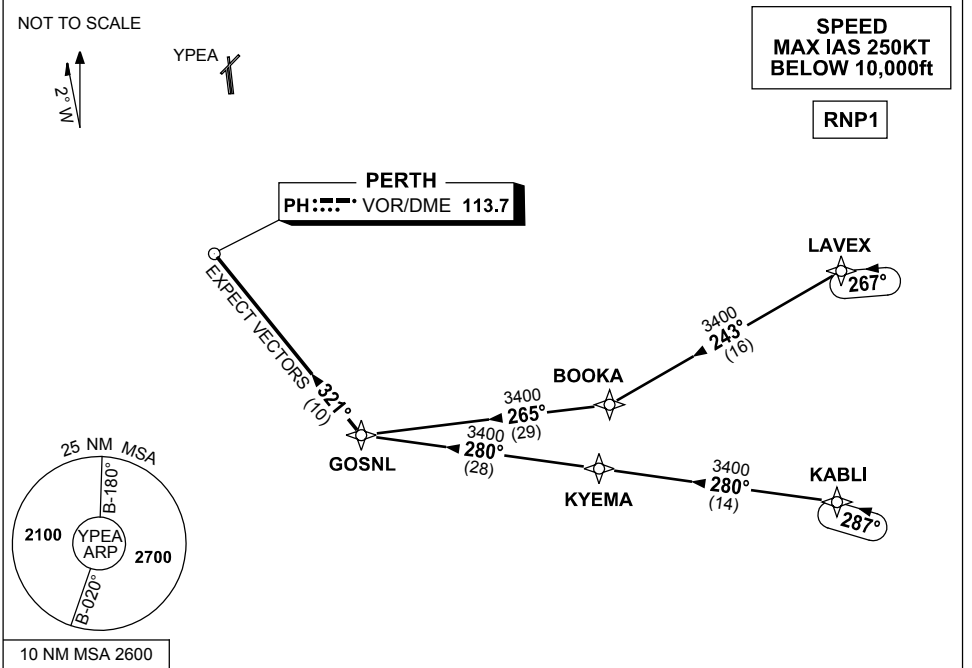


**STANDARD INSTRUMENT ARRIVAL (STAR)  
PEARCE FOUR GOLF ARRIVAL (RNAV)  
PEARCE, WA (YPEA)**

**13 JUN 2024**

ATIS 340 136.4 316.1	DEP PEA CEN 123.3 135.9	APP PEA APP 130.2	TWR 118.3 257.8	FIA (AH) PH CEN 135.25	CTAF+AFRU (AH) 118.3	AWIS (AH) 316.1	Bearings are Magnetic Elevations in FEET AMSL
----------------------------	-------------------------------	-------------------------	--------------------	---------------------------	-------------------------	--------------------	--



**TRANSITIONS:**

**LAVEX:  
(NON-JET)**

- From LAVEX track 243° to BOOKA
- Turn RIGHT, track 265° to GOSNL
- Then follow ARRIVAL instructions

**KABLI:  
(JET)**

- From KABLI track 280° to KYEMA
- Track 280° to GOSNL
- Then follow ARRIVAL instructions

**ARRIVAL:**

**PEARCE FOUR GOLF**

- From GOSNL, turn RIGHT, track 321° to PH VOR
- Expect radar vectors to YPEA

**COMMUNICATIONS FAILURE: PROCEDURE IN IMC**

- Squawk 7600, comply with vertical navigation requirements, but not below MSA.
- Track via the latest STAR clearance to the nominated runway, then fly the most suitable approach in accordance with ERSA EMERG Section 1.5.

Changes: LAVEX REPLACES GRENE, KABLI REPLACES BEVLY, VALIDITY INDICATOR, VAR, Editorial.

PEASR02-179