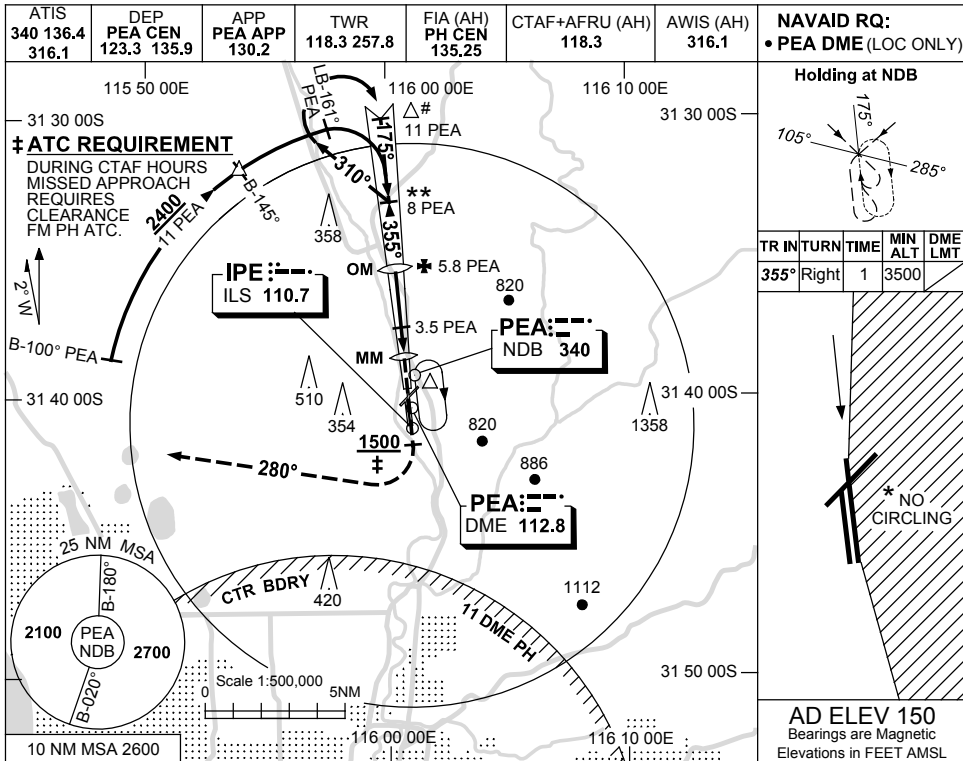


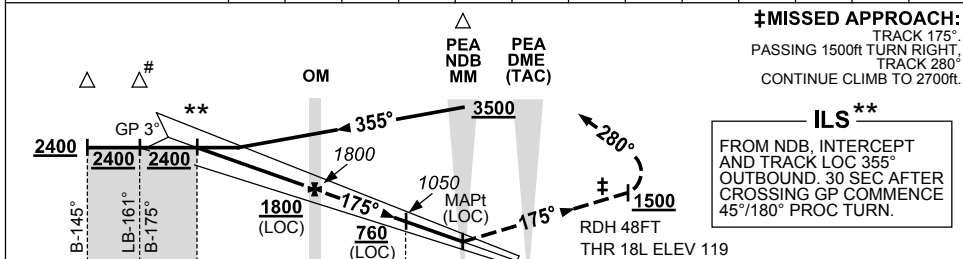
USE QNH

ILS-Z or LOC-Z RWY 18L
PEARCE, WA (YPEA)

13 JUN 2024



DIST TO PEA DME	7.7	7	6	5.8	5	4	3.5	3	2.3				
ALT (3° APCH PATH)	2400	2170	1850	1800	1530	1210	1050	890	660				



NM TO PEA DME	11	8	5.8	3.5	1.3	0
NM TO THR 18L			5.1	0.6	0	

CATEGORY	A	B	C	D
S-I ILS		430 (311)	1.7 (VIS 1.5 WITH ACTUAL QNH)	
S-I LOC/DME		660 (541-3.1)		
CIRCLING *	780 (630-2.4)		1010 (860-4.0)	1070 (920-5.0)
ALTERNATE	(1130-4.4)		(1360-6.0)	(1420-7.0)

- NOTES**
1. RADAR VECTORS TO IAF ONLY.
 2. NO CIRCLING EAST OF RWY 18L/36R.
 3. TRAINING DURING CTAF HOURS - REFER ERSA FAC.

Changes: VAR.

PEAI01-179