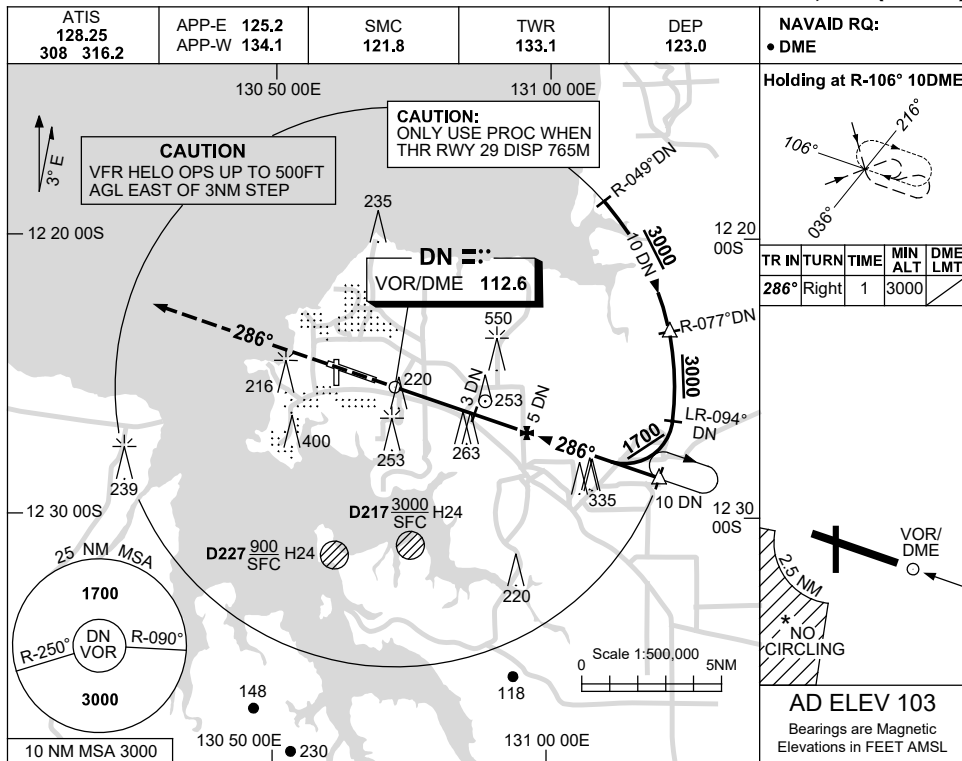


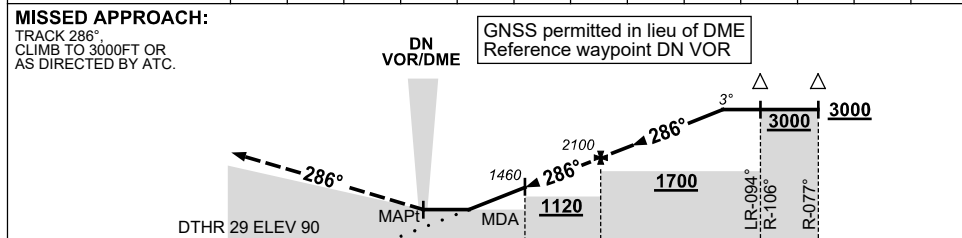
USE QNH

VOR-T RWY 29
DARWIN, NT (YPDN)

1 DEC 2022



DIST TO DN DME	0.2	1	2	3	4	5	6	7	7.8				
ALT (3° APCH PATH)	570	830	1140	1460	1780	2100	2420	2740	3000				



NOTES

1. ACFT MAY BE RADAR VECTORED TO FINAL.
2. DME 41X(110.4) NOT TO BE USED WITH THIS PROCEDURE.
- *3. SPECIAL ALTN MNM 800/4KM.
- *4. NO CIRCLING IN SECTOR SW OF RWY 11/29 AND RWY 18/36 BEYOND 2.5NM.

CATEGORY	A	B	C	D
S-I VOR/DME	570 (480-2.7)			
CIRCLING *	700 (597-2.4)	800 (697-4.0)	1000 (897-5.0)	
ALTERNATE‡	(1097-4.4)	(1197-6.0)	(1397-7.0)	

Changes: MAG VAR AND NOTE 2.

PDNV005-173