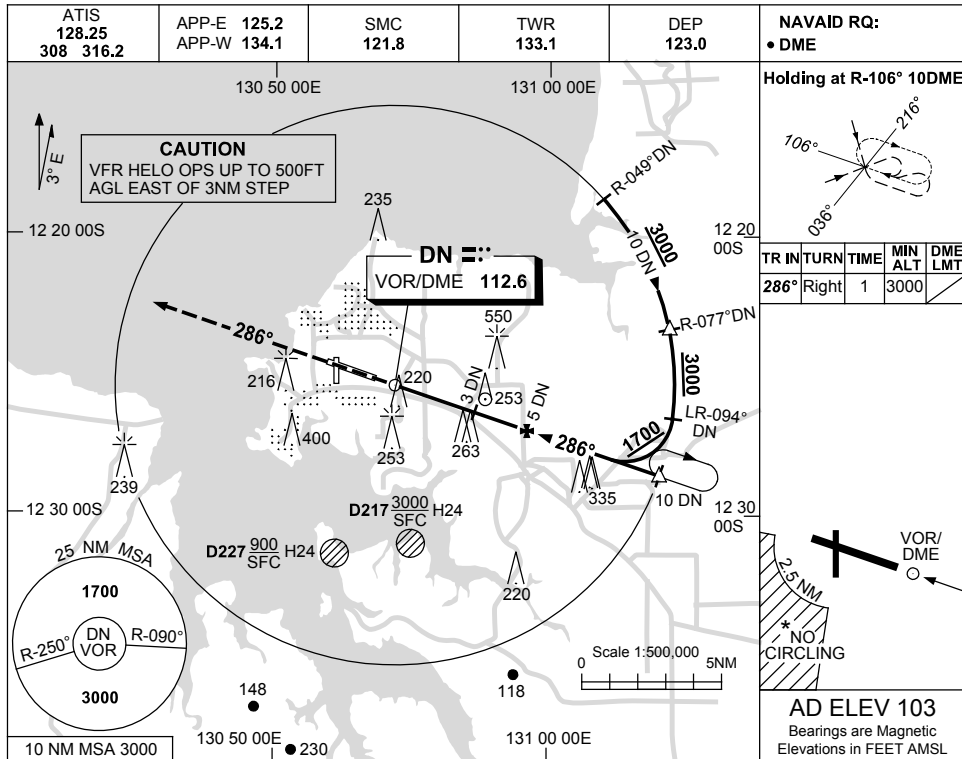


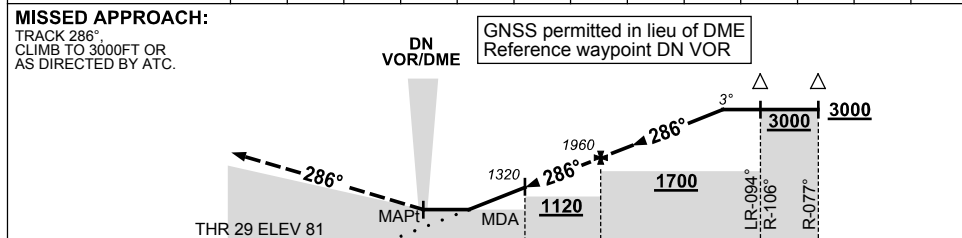
USE QNH

VOR-Z RWY 29
DARWIN, NT (YPDN)

23 MAR 2023



DIST TO DN DME	0.6	1	2	3	4	5	6	7	8	8.3		
ALT (3° APCH PATH)	570	690	1000	1320	1640	1960	2280	2600	2910	3000		



NM TO DN DME

CATEGORY	A	B	C	D
S-I VOR/DME	570 (489-1.9)			
CIRCLING *	700 (597-2.4)		800 (697-4.0)	1000 (897-5.0)
ALTERNATE ‡	(1097-4.4)		(1197-6.0)	(1397-7.0)

*3. SPECIAL ALTN MNM 800/4KM.
 *4. NO CIRCLING IN SECTOR SW OF RWY 11/29 AND RWY 18/36 BEYOND 2.5NM.

Changes: VIS MINIMA.

PDNV003-174