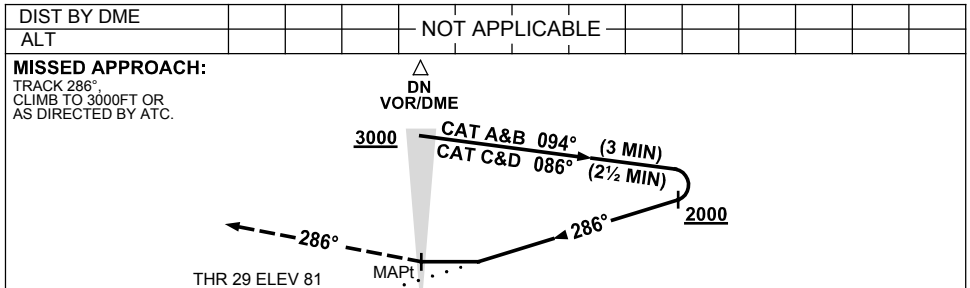
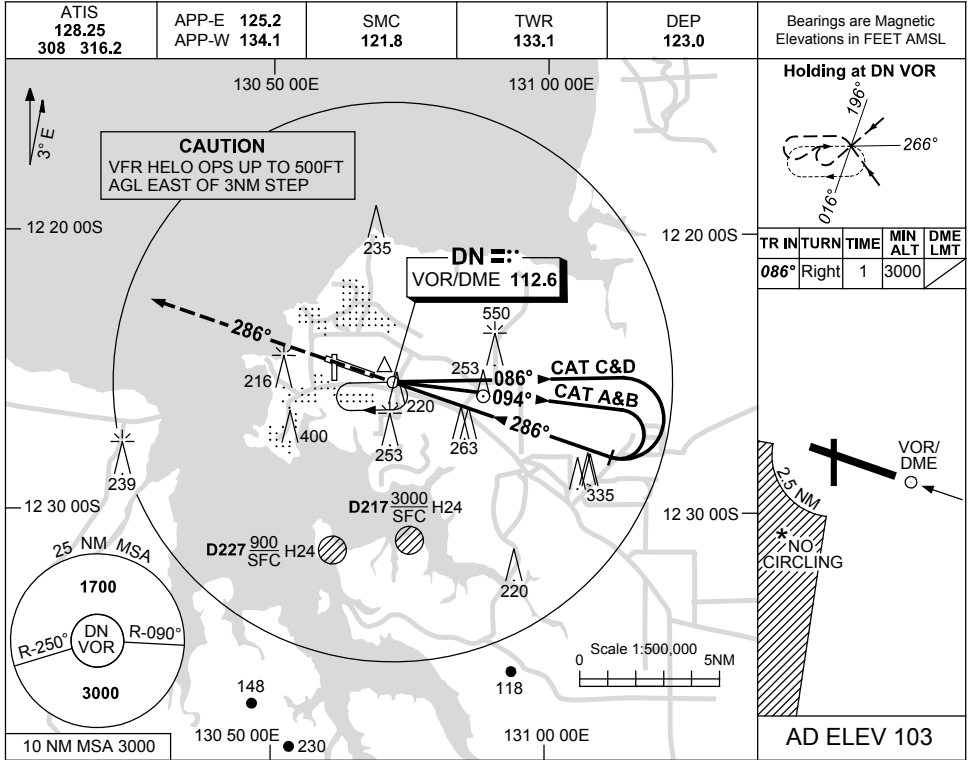


USE QNH

VOR-Y RWY 29  
**DARWIN, NT (YPDN)**

23 MAR 2023



**NOTES**

CATEGORY	A	B	C	D
S-I VOR	<b>1100</b> (1019-4.9)			
CIRCLING *	<b>1100</b> (997-2.4)	<b>1100</b> (997-4.0)		<b>1100</b> (997-5.0)
ALTERNATE	(1497-4.4)	(1497-6.0)		(1497-7.0)

1. MAX IAS:  
 INITIAL: CAT C/D 210KT
2. ACFT MAY BE RADAR  
 VECTORED TO FINAL.
- \*3. NO CIRCLING IN SECTOR  
 SW OF RWY 11/29 AND  
 RWY 18/36 BEYOND 2.5NM.

Changes: VIS MINIMA.

PDNVO02-174