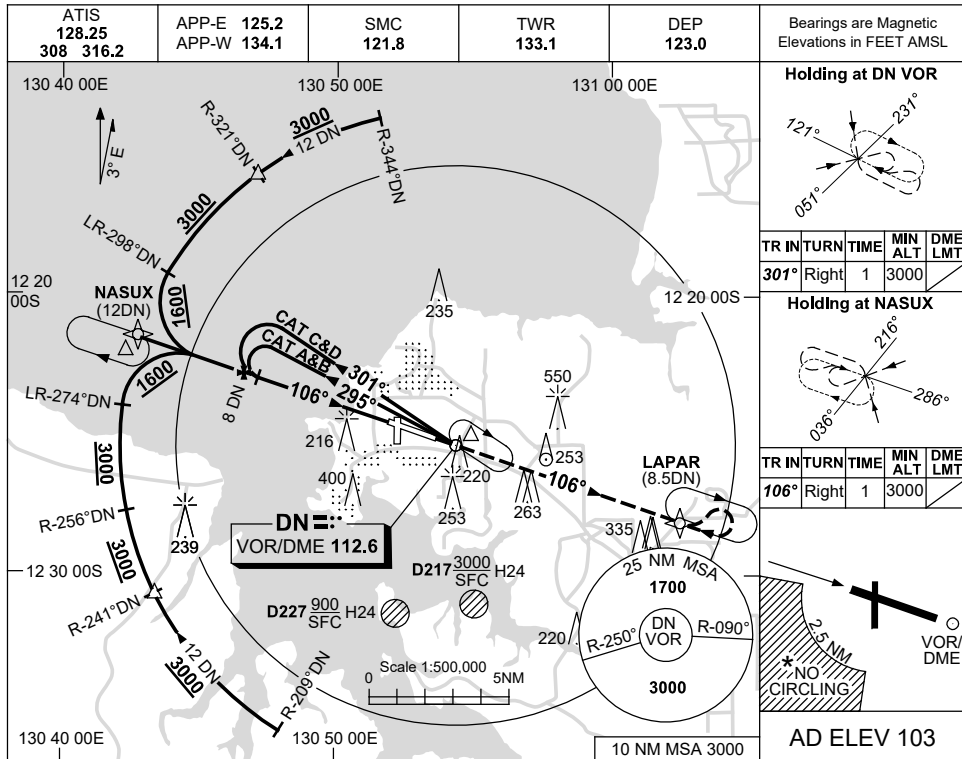


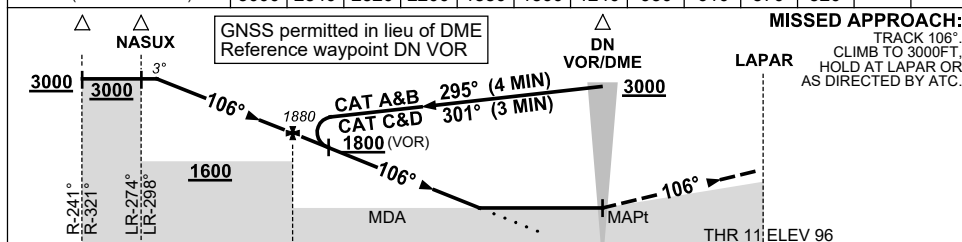
USE QNH

VOR-Z RWY 11
DARWIN, NT (YPDN)

1 DEC 2022



DIST TO DN DME	11.5	11	10	9	8	7	6	5	4	3.9	3.7		
ALT (3° APCH PATH)	3000	2840	2520	2200	1880	1560	1240	930	610	570	520		



NM TO 12 12 8 0 8.5
 DN DME

NOTES

1. MAX IAS: INITIAL : 210KT.
2. ACFT MAY BE RADAR VECTORED TO FINAL.
3. DME 41X(110.4) NOT TO BE USED WITH THIS PROCEDURE.
- *4. SPECIAL ALTN MNM 800/4 KM.
- *5. NO CIRCLING IN SECTOR SW OF RWY 11/29 AND RWY 18/36 BEYOND 2.5NM.

CATEGORY	A	B	C	D
S-I VOR		570 (467-2.6)		
S-I VOR/DME		520 (417-2.3)		
CIRCLING *	700 (597-2.4)		800 (697-4.0)	1000 (897-5.0)
ALTERNATE *	(1097-4.4)		(1197-6.0)	(1397-7.0)

Changes: MAG VAR AND NOTE 3.

PDNV001-173