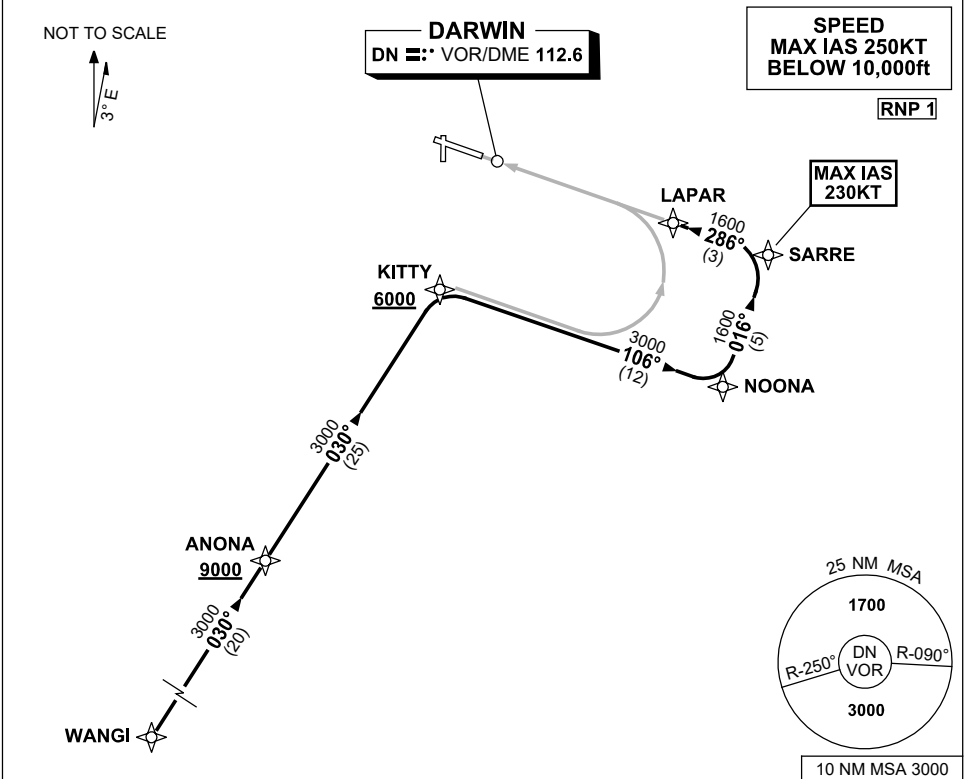


**STANDARD INSTRUMENT ARRIVAL (STAR)
WANGI FOUR WHISKEY, X-RAY ARRIVALS (RNAV) RWY 29
DARWIN, NT (YPDN)**

21 MAR 2024

ATIS 128.25 308 316.2	APP-E 125.2 APP-W 134.1	TWR 133.1	SMC 121.8		Bearings are Magnetic Elevations in FEET AMSL
-----------------------------	----------------------------	--------------	--------------	--	--



ARRIVAL: WANGI FOUR

RWY 29 WHISKEY:

- From WANGI track 030° to ANONA **Cross** ANONA AT or ABV 9000ft
- Track 030° to KITTY for RNP W (AR) or RNP S (AR) RWY 29 approach **Cross** KITTY AT or ABV 6000ft

RWY 29 X-RAY:

- From WANGI track 030° to ANONA **Cross** ANONA AT or ABV 9000ft
- Track 030° to KITTY **Cross** KITTY AT or ABV 6000ft
- Turn RIGHT, track 106° to NOONA
- Turn LEFT, track 016° to SARRE **MAX IAS 230KT** from SARRE
- Turn LEFT, track 286° to LAPAR for RNP X (AR) or RNP Y (AR) RWY 29 approach

COMMUNICATIONS FAILURE: PROCEDURE IN IMC

- Squawk 7600, comply with vertical navigation requirements, but not below MSA.
- Track via the latest STAR clearance to the nominated runway, then fly the most suitable approach in accordance with ERSA EMERG Section 1.5.

Changes: STAR VALIDITY INDICATOR.

PDNSR09-178