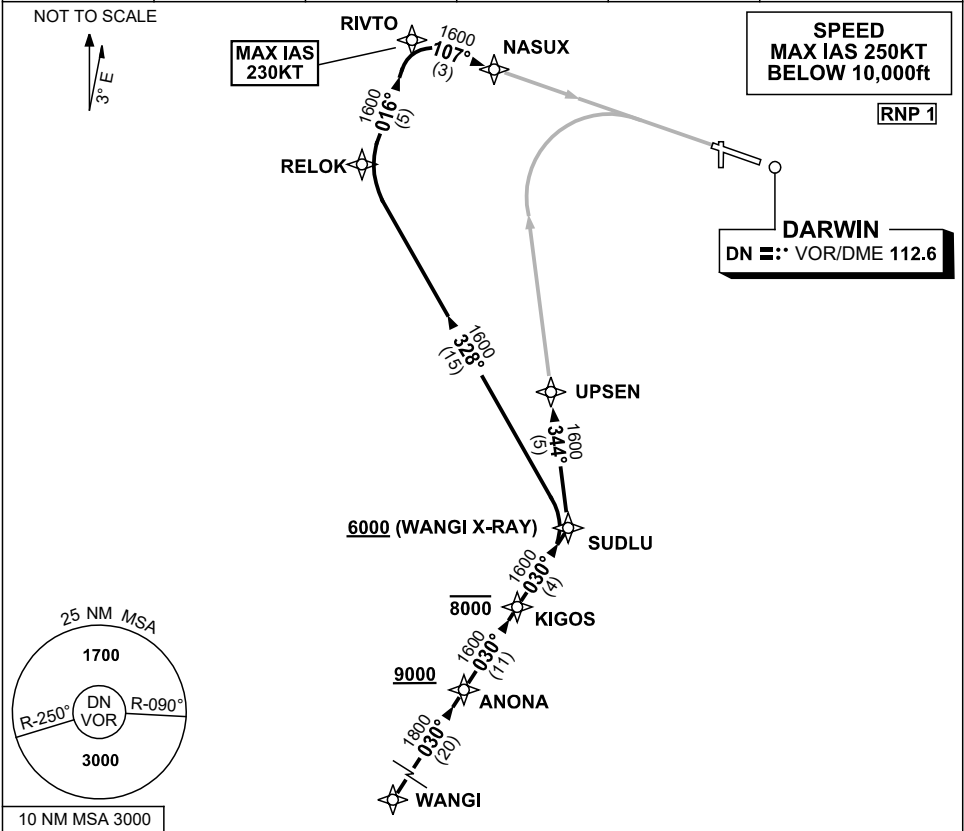


**STANDARD INSTRUMENT ARRIVAL (STAR)
WANGI FOUR WHISKEY, X-RAY ARRIVALS (RNAV) RWY 11
DARWIN, NT (YPDN)**

30 NOV 2023

ATIS 128.25 308 316.2	APP-E 125.2 APP-W 134.1	TWR 133.1	SMC 121.8		Bearings are Magnetic Elevations in FEET AMSL
-----------------------------	----------------------------	--------------	--------------	--	--



- | | |
|---|---|
| <p>ARRIVAL: WANGI FOUR</p> <p>RWY 11 WHISKEY:</p> <ul style="list-style-type: none"> From WANGI track 030° to ANONA
Cross ANONA AT or ABV 9000ft Track 030° to KIGOS
Cross KIGOS AT or BLW 8000ft Track 030° to SUDLU Turn LEFT, track 344° to UPSEN for RNP W (AR) or RNP S (AR) RWY 11 approach | <p>RWY 11 X-RAY:</p> <ul style="list-style-type: none"> From WANGI track 030° to ANONA
Cross ANONA AT or ABV 9000ft Track 030° to KIGOS
Cross KIGOS AT or BLW 8000ft Track 030° to SUDLU
Cross SUDLU AT or ABV 6000ft Turn LEFT, track 328° to RELOK Turn RIGHT track 016° to RIVTO, MAX IAS 230KT from RIVTO Turn RIGHT track 107° to NASUX for RNP X (AR) or RNP Y (AR) RWY 11 approach |
|---|---|

COMMUNICATIONS FAILURE: PROCEDURE IN IMC

- Squawk 7600, comply with vertical navigation requirements, but not below MSA.
- Track via the latest STAR clearance to the nominated runway, then fly the most suitable approach in accordance with ERSA EMERG Section 1.5.

Changes: RIVTO REPLACES ALLOT, RELOK REPLACES GIVEN, SUDLU REPLACES KINGS, Editorial.

PDNSR08-177